

## SAC

### PIATTAFORME MONOCELLA CON PIANO DI CARICO INOX

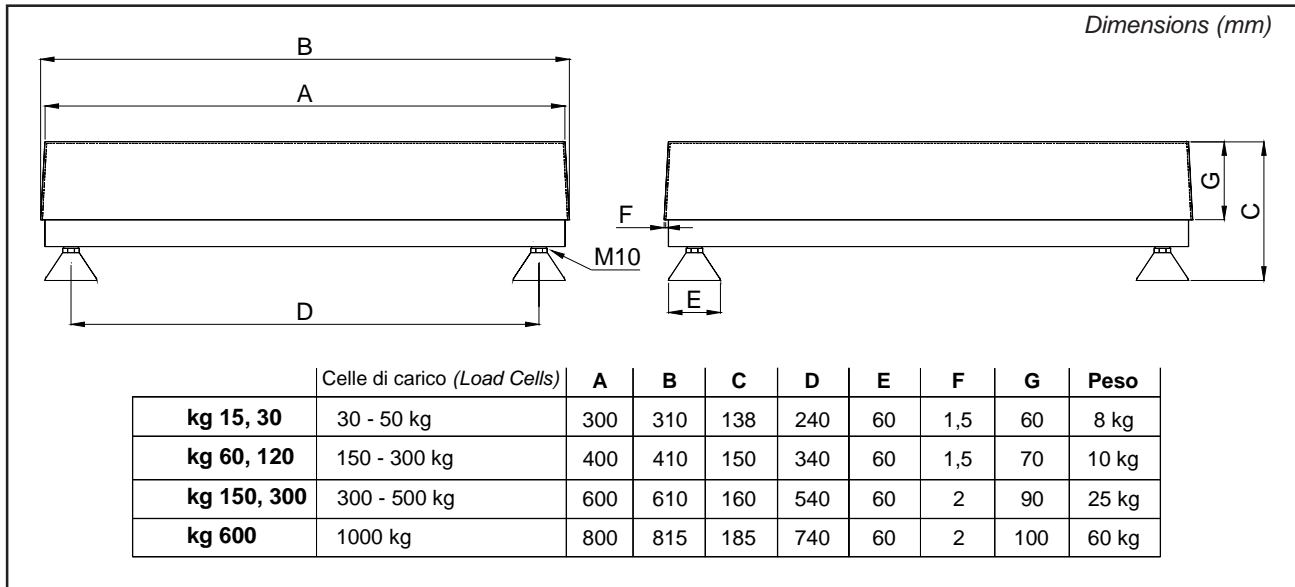
### SINGLE CELL PLATFORMS WITH STAINLESS STEEL TOP



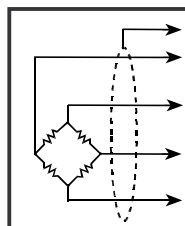
**Portate (capacity): 15 - 30 - 60  
- 120 - 150 - 300 - 600 kg**

- STRUTTURA IN TUBOLARI IN ACCIAIO VERNICIATO
- PIANO DI CARICO IN ACCIAIO INOX AISI 304 APPOGGIATO
- CELLA DI CARICO IN LEGA D'ALLUMINIO IP65
- PIEDINI IN ACCIAIO ZINCATO E POLIAMMIDE

- STEEL TUBULAR STRUCTURE
- AISI 304 STAINLESS STEEL LOADING TOP (laid)
- OFF-CENTER ALUMINIUM IP65 LOAD CELL
- GALVANIZED STEEL & POLYAMID FEET



PORTATA MAX MAX CAPACITY	DIVISIONE CE-M CE-M DIVISION
SAC-15 kg	kg 0.005
SAC-30 kg	kg 0.01
SAC-60 kg	kg 0.02
SAC-120 kg	kg 0.05
SAC-150 kg	kg 0.05
SAC-300 kg	kg 0.1
SAC-600 kg	kg 0.2



	SAC 15 - 120 kg	SAC 150 - 300	SAC 600 kg
SCHERMO (SHIELD)			
+ SEGNALE (+SIGNAL)	VERDE (GREEN)	VERDE (GREEN)	BLU (BLUE)
+ ALIMENT. (+EXCIT.)	ROSSO (RED)	ROSSO (RED)	ROSSO (RED)
+SENSE (+SENSE)	BLU (BLUE)	BLU (BLUE)	MARRONE (BROWN)
- SEGNALE (-SIGNAL)	BIANCO (WHITE)	BIANCO (WHITE)	BIANCO (WHITE)
- ALIMENT. (-EXCIT.)	NERO (BLACK)	NERO (BLACK)	GIALLO (YELLOW)
-SENSE (-SENSE)	MARRONE (BROWN)	GIALLO (YELLOW)	NERO (BLACK)

A richiesta versione approvata  
On request version approved OIML R60 C3

Dove previsto (where provided)