

COBRA 365 ELECTRONIC CONTROL UNIT

✓ **COMPACT DESIGN**

✓ **NO DUST RELEASE**

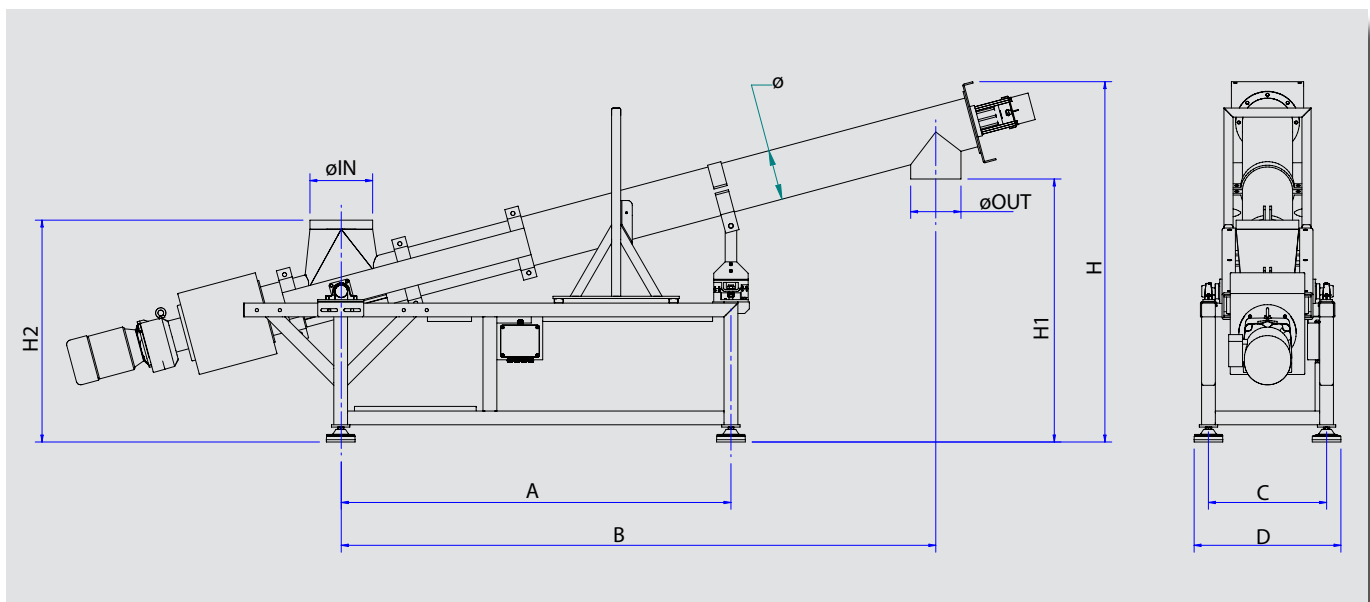
✓ **UP TO 80 m³/h**

The CDS weighing auger is especially suitable for the dosing of powdery products that can not be extracted by means of weighing belt (for example “ventilated powders”) and where it is necessary to completely avoid the emission of dust into the environment.

The machine is made up of 3 main components:

- supporting frame adapted to fit customer plant;
- weight screw custom-made to meet specific application needs, i.e. material specifications and desired flow rate;
- control panel providing total cycle control, can be customised to meet customer needs and interfaced with pre-existing plant systems.

On request, the machine can be fitted with level indicators upstream of the plant to monitor product in feeding buffer, diverter valves for material recovery and flow switches to control clogging.



STANDARD MODELS DIMENSIONS (mm)

	ø (IN-OUT)	A	B	C	D	H	H1	H2	Tilt
CDS 139	139	1700	2300	515	640	1450	1100	900	15°
CDS 168	168	1700	2300	515	640	1450	1100	930	15°
CDS 219	219	1700	2600	515	640	1570	1150	970	15°
CDS 273	273	2000	2800	565	690	1630	1150	970	15°
CDS 323	323	2000	3000	620	470	1750	1160	1050	15°
CDS 406	406	2500	3000	800	925	1850	1160	1015	15°

REFERENCE MAXIMUM CAPACITY VALUES

Reference maximum capacity values specified below refer to the metering of material with small grain size and specific weight equal to 1 kg/dm³.

According to used motor drive, the allowed working range varies from 5 to 15 times.

SCREW MODEL	SPECIFIC WEIGHT (kg/dm ³)	MAX FLOW RATE (kg/h)
CDS 139	1.0	3.000
CDS 168	1.0	6.000
CDS 219	1.0	10.000
CDS 273	1.0	25.000
CDS 323	1.0	50.000
CDS 406	1.0	80.000



CDS COMPLETE WITH ELECTRICAL CONTROL PANEL ON FIELD AND DIVERTER VALVE

TECHNICAL FEATURES

Main structure	Extruded aluminum profiles
Tubular housing	Carbon steel or stainless steel
Screw	Carbon steel or stainless steel
Diverter valve	Optional
Wear-resistant coating	Optional
Inspection door	Present at loading and unloading port
Weighing system	Single compression load cells C3
Speed control	Incremental encoder 1000 pulses/round
Electrical junction boxes	Available for load cells and encoder
Motor	Asynchronous three-phase multi-voltage or semi vectorial (optional)
Motor fan	Optional depending on the application