

JUNCTION BOXES PPS

ELECTRICAL JUNCTION BOXES FOR LOAD CELLS AND ENCODER

STAD

J-BOX2

LOAD CELLS CONNECTED

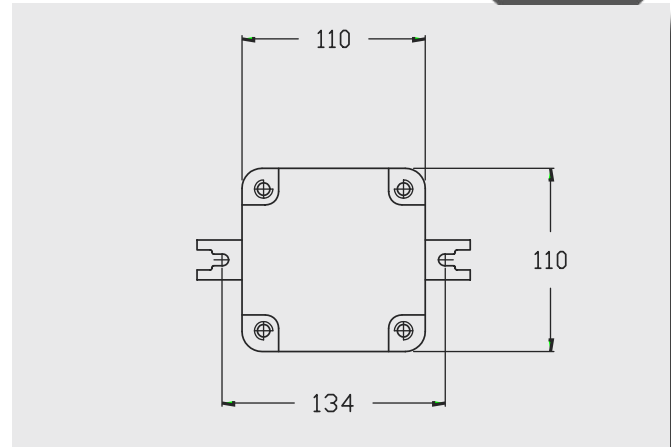
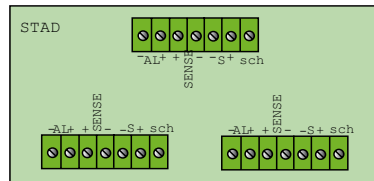
2

ENCODER CONNECTION

NO

IP PROTECTION

IP56



MECHANICAL DRAWING (mm)

TECHNICAL FEATURES

Load cells connection	Up to 2 load cells (6 wire)
Encoder connection	NO
Dimension (mm)	110 x 110 x 56(h) - Fixing L=134mm
IP protection	IP56
Case material	Plastic (grey color)
Top material	Plastic (grey color)

EE-BOX

LOAD CELLS CONNECTED

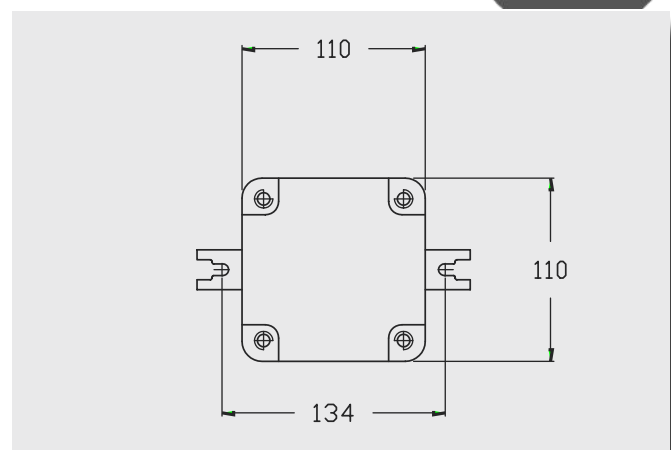
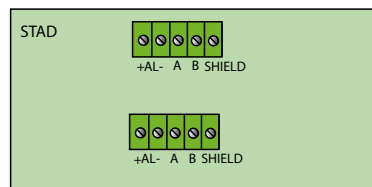
/

ENCODER CONNECTION

YES

IP PROTECTION

IP56



MECHANICAL DRAWING (mm)

TECHNICAL FEATURES

Load cells connection	/
Encoder connection	YES
Dimension (mm)	110 x 110 x 56(h) - Fixing L=134mm
IP protection	IP56
Case material	Plastic (grey color)
Top material	Plastic (grey color)

Rev. 02 del 06/05/2016

JUNCTION BOXES PPS

ELECTRICAL JUNCTION BOXES FOR LOAD CELLS AND ENCODER

STAD

J+EE_BOX

LOAD CELLS CONNECTED

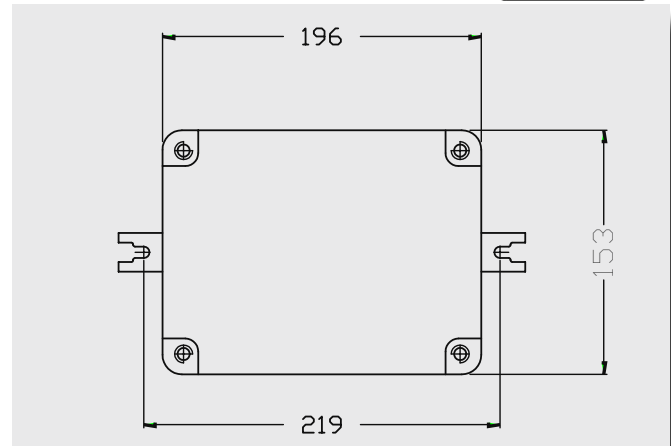
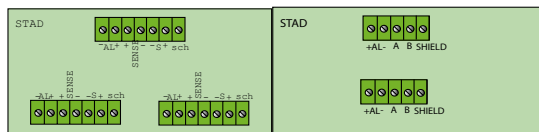
2

ENCODER CONNECTION

YES

IP PROTECTION

IP56



MECHANICAL DRAWING (mm)

TECHNICAL FEATURES

Load cells connection	Up to 2 load cells (6 wire)
Encoder connection	YES
Dimension (mm)	196 x 153 x 80(h) - Fixing L=219mm
IP protection	IP56
Case material	Plastic (grey color)
Top material	Plastic (grey color)

J+EE_BOX - INOX

LOAD CELLS CONNECTED

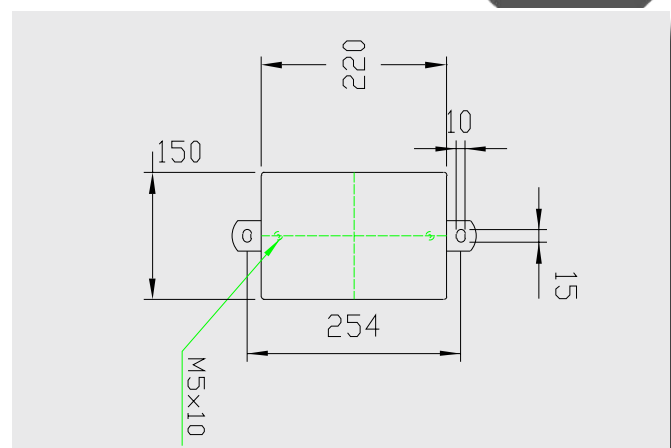
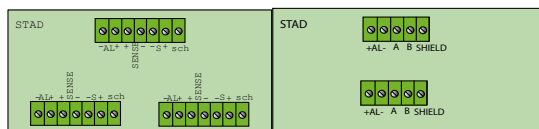
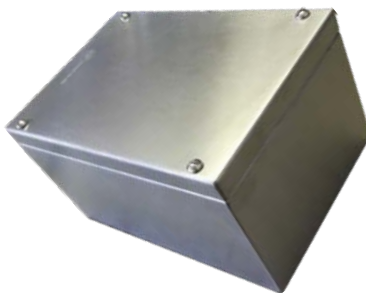
2

ENCODER CONNECTION

YES

IP PROTECTION

IP69K



MECHANICAL DRAWING (mm)

TECHNICAL FEATURES

Load cells connection	Up to 2 load cells (6 wire)
Encoder connection	YES
Dimension (mm)	150 x 220 x 120 (h) - Fixing holes distance L=254mm
IP protection	IP66 - IP67 - IP69K
Case material	Stainless steel AISI 304 (AISI 316 available as an option)
Top material	Stainless steel AISI 304 (AISI 316 available as an option)

Rev. 02 del 06/05/2016