

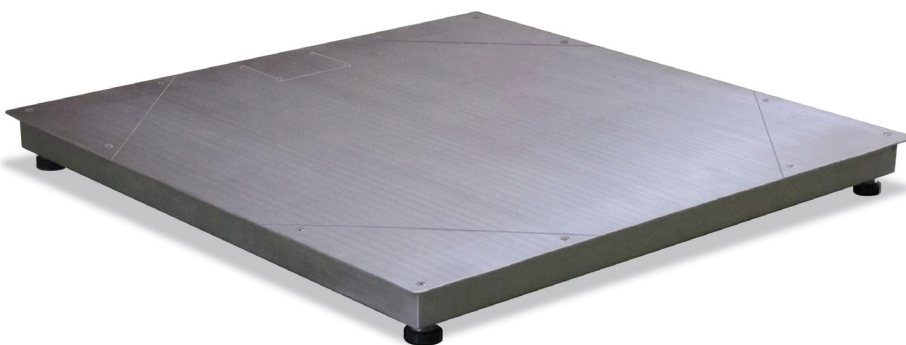
# P1250 INOX - 1500 INOX

## AISI 304 STAINLESS STEEL PLATFORMS WITH 4 IP68 LOAD CELLS

# STAD

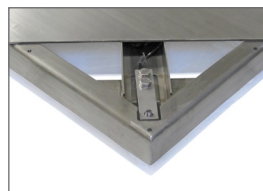


Capacity up to 3000 kg



### DESCRIPTION

- AISI 304 stainless steel platform with inspectable loading top on cells and junction box sides.
- 4 IP68 17-4 PH stainless steel shear beam load cell. 1000 kg capacity. OIML R60 C3 accuracy class (IP69K protection on request)
- IP67 stainless steel junction box with equalization board and 6-output wires cable (5 m length).
- AISI 304 stainless steel self-centering adjustable jointed feet.
- Two M12 holes for lifting.
- **On request:** CUSTOM platforms with non-standard dimensions up to 2500x2500 mm and capacities up to 6000 kg.



| CAPACITY  | kg | ACCURACY CLASS<br>C3 | DIMENSION (mm) | WEIGHT (kg) | CODE      |
|-----------|----|----------------------|----------------|-------------|-----------|
| max. 3000 |    | •                    | • 1250 x 1250  | 90          | P1250INOX |
| max. 3000 |    | •                    | • 1500 x 1500  | 130         | P1500INOX |

⌋  
ON REQUEST

### CERTIFICATIONS



OIML R60 C3

CERTIFICATIONS ON REQUEST



Declaration of conformity + IP69K marking protection rating  
Water protection when cleaning high pressure / steam jet (Test: pressurized hot water is sprayed from a distance of 150 mm).  
Water pressure 100 bar; temperature 80 ° C; test duration 250 seconds (Reference standard DIN 40050-9).



ATEX II 1GD (zone 0-1-2-20-21-22)



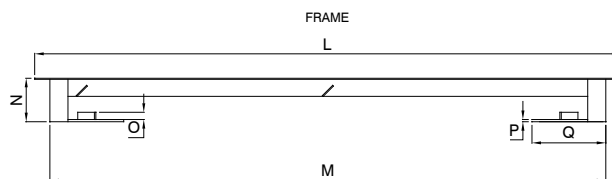
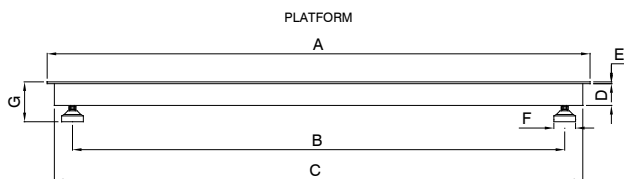
IECEX (zone 0-1-2-20-21-22)

# P1250 INOX - 1500 INOX

## AISI 304 STAINLESS STEEL PLATFORMS WITH 4 IP68 LOAD CELLS



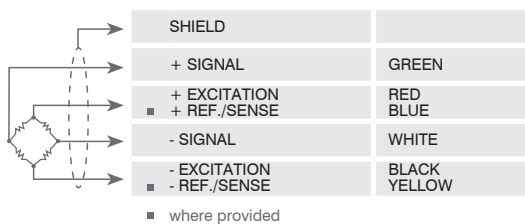
### DIMENSIONS (mm)




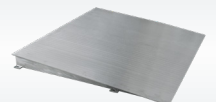


| Code       | Load Cells capacities | Platforms A | B    | C    | D  | E   | F  | G   | Gross Weight |
|------------|-----------------------|-------------|------|------|----|-----|----|-----|--------------|
| P1250INOXN | 1000 kg               | 1250 x 1250 | 1115 | 1210 | 60 | 4.5 | 60 | 105 | 90 kg        |
| P1500INOXN | 1000 kg               | 1500 x 1500 | 1370 | 1460 | 70 | 4.5 | 60 | 115 | 130 kg       |

| Code         | L           | M           | N   | O  | P | Q   | Gross Weight |
|--------------|-------------|-------------|-----|----|---|-----|--------------|
| TELP1250INOX | 1370 x 1370 | 1270 x 1270 | 115 | 20 | 8 | 204 | 30 kg        |
| TELP1500INOX | 1620 x 1620 | 1536 x 1536 | 120 | 20 | 6 | 204 | 36 kg        |

### ELECTRICAL CONNECTIONS



### OPTIONS ON REQUEST

| DESCRIPTION  | CODE                         |
|--|------------------------------|
|  <p>AISI 304 stainless steel pit frame with center adjusting brackets.<br/>For platforms:<br/>1250x1250 mm<br/>1500x1500 mm</p> | TELP1250INOX<br>TELP1500INOX |
|  <p>Stainless steel access ramp.<br/>Dimensions: 1250x1060xh110mm</p>   | P1250INOXRAMP                |
|  <p>Indicator stainless steel support column (Ø 38 mm, h 700 mm)<br/>Steel bracket complete with wheels.</p>                    | MOBILCOLONNA                 |
|  <p>AISI 304 stainless steel plates for constraint against lateral forces and anti-tilt. For self-centring joint foot.</p>      | PPV                          |

The Company reserves the right to make changes to the technical data, drawings and images without notice.