

# SBB-P

BIG BAG DRAINING SYSTEM COMPLETE WITH HOIST

# STAD



The SBB-P discharging stations for dosing powdery products stored in big bags, like all STAD machines, are designed and produced to customer's specifications.

The basic model consists of a frame complete, in the upper side, with an electric chain hoist on a traveling beam, to lift and position the FIBC, a hopper, a telescopic stationary frame adjustable to the height of the big bag, a hopper containing the powder, and a mechanical extractor suited to the product to be extracted (weighing belt, metering screw, rotary valve, etc.).

The station can be customised with devices such as:

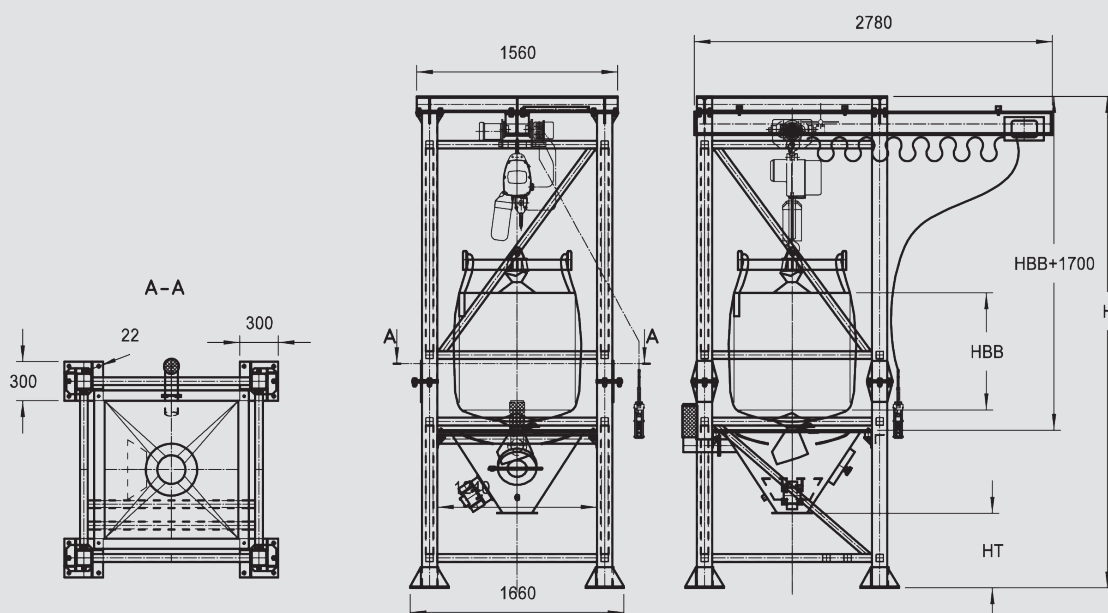
- electronic weighing and material batching control;
- electromagnetic bag shaking and vibro-aerators in case of non free-flowing powders;
- etc.



**CUSTOM MADE  
MACHINE**



**AVAILABLE IN STAINLESS STEEL  
AISI 304 / 316**



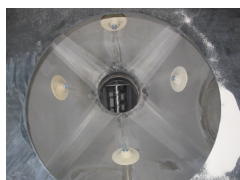
**SBB**

$$H = HT + HBB + 1200\text{mm}$$



### SBB

### EXAMPLES OF AVAILABLE OPTIONS



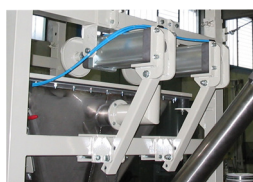
FLUIDISING  
FLOW AIDS



BIG BAGS  
MOVING DEVICE



WINDOW  
WITH GLOVES



BIG BAGS HORIZONTAL  
MOVING DEVICE

### TECHNICAL FEATURES

Main structure	Carbon steel or stainless steel AISI 304 / 316
Loading hopper	Carbon steel or stainless steel AISI 304 / 316
Frame structure	Adjustable telescopic height
Anti-dust plan	Black or food grade rubber
Access door	Stainless steel with mechanical stop
Anti-vibration mounts	Steel and rubber 60ShA
Fluidification systems	Optional
Weighing system	Optional with compression load cells
Anti-tilt system	Standard when there is the weighing system
Window with gloves	Optional
ATEX conformity	Available as an option for ATEX 22 zones

