



CUSTOM MADE MACHINE

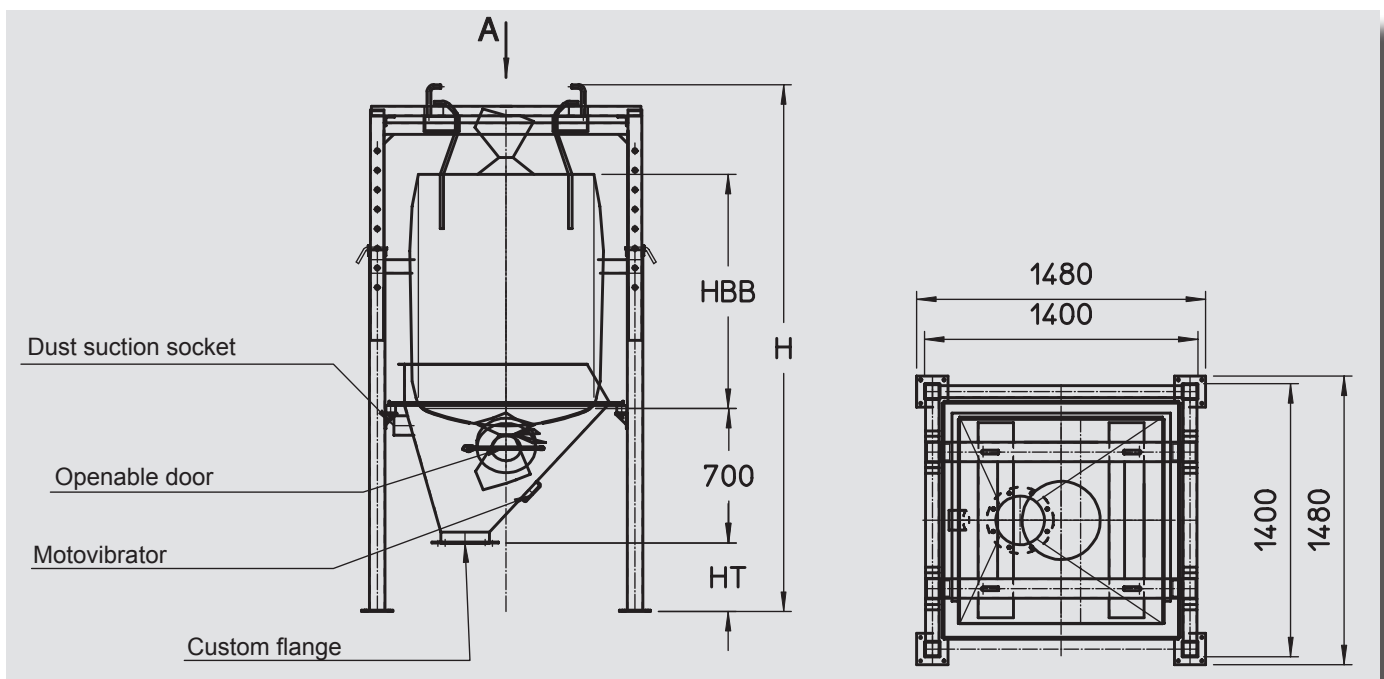


**AVAILABLE IN STAINLESS STEEL
AISI 304 / 316**



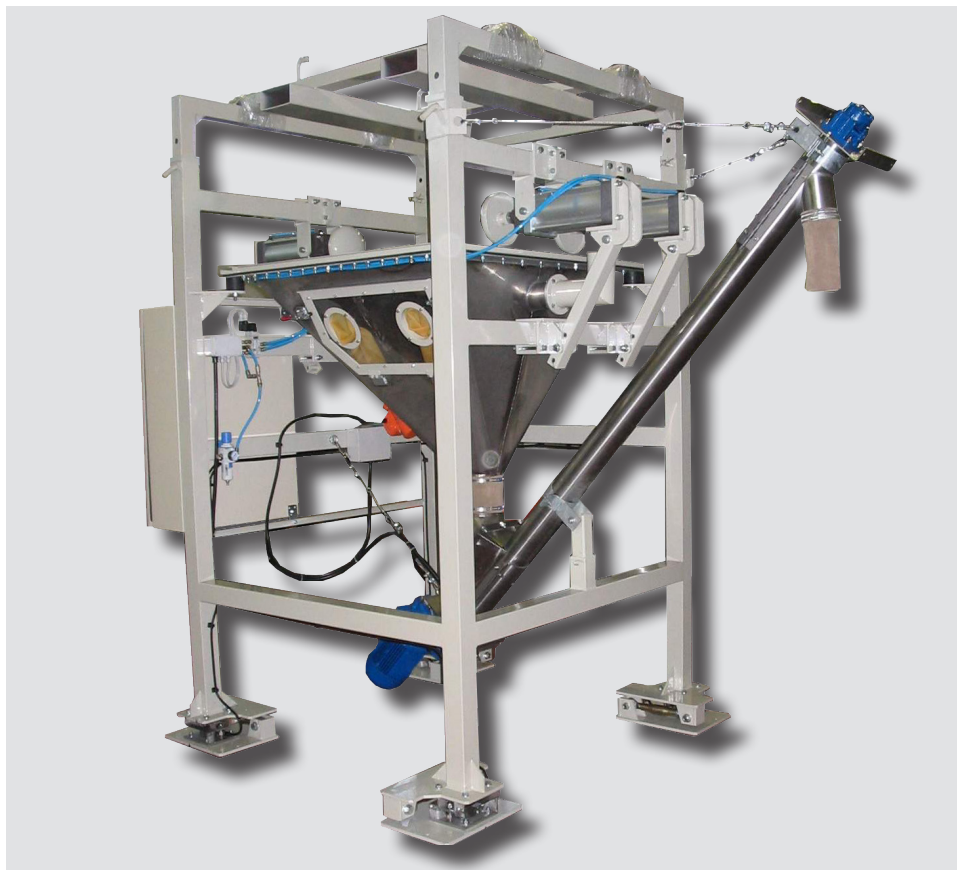
SBB STATION MOD. SBB-C COMPLETE WITH SCREW FEEDER AND LOCAL CONTROL PANEL

Like all the machines manufactured by Stad, SBB plants - suitable to batch powdery products stacked inside big bags - are designed and manufactured according to customer's specification. The basic model consist of a mobile telescopic big bag holder frame that can be moved with a forklift (to be adjusted along the big bag height), a stationary frame, a powder-charging hopper, and a mechanical extractor suitable to the products being extracted (weighing belt, metering screw, rotary valve, ecc...). This plant can be customized by adding several devices, such us: electronic weighing and material batching control; big bag and fluidising flow aids electropneumatic shaking in case of non-smooth powders.

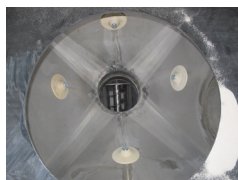


SBB

$$H = HT + HBB + 1200\text{mm}$$



SBB EXAMPLES OF AVAILABLE OPTIONS



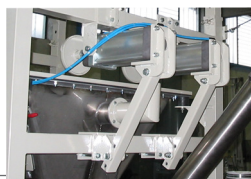
FLUIDISING
FLOW AIDS



BIG BAGS
MOVING DEVICE



WINDOW
WITH GLOVES



BIG BAGS HORIZONTAL
MOVING DEVICE

TECHNICAL FEATURES

Main structure	Carbon steel or stainless steel AISI 304 / 316
Loading hopper	Carbon steel or stainless steel AISI 304 / 316
Frame structure	Adjustable telescopic height
Anti-dust plan	Black or food grade rubber
Access door	Stainless steel with mechanical stop
Anti-vibration mounts	Steel and rubber 60ShA
Fluidification systems	Optional
Weighing system	Optional with compression load cells
Anti-tilt system	Standard when there is the weighing system
Window with gloves	Optional
ATEX conformity	Available as an option for ATEX 22 zones

