

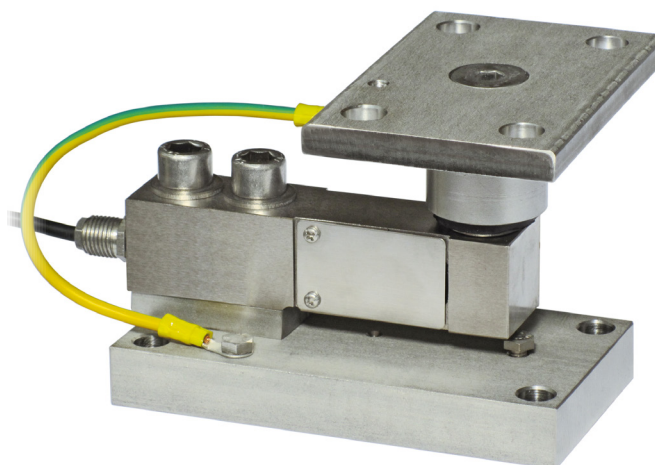
# STF2000 / 2000Z

## MOUNTING KIT for SHEAR BEAM load cells

# STAD

Series load cells: SFTP

Application range from 75 to 2000 kg



MOUNTING KIT MODEL	FOR LOAD CELLS	NET WEIGHT OF MOUNTING KIT (kg)	CODE	MATERIAL
STF2000	SFTP	2.9	STF2000	STAINLESS STEEL AISI 304
STF2000Z	SFTP	2.9	STF2000Z	GALVANIZED STEEL

*Load cell not included.*

### DESCRIPTION

- Upper plate with a compression joint in AISI 304 stainless steel and rubber.
- Lower plate and block in AISI 304 stainless steel (STF500, STF2000) or in galvanized steel (STF2000Z).
- Misalignment compensation of the support plates structure.
- Adjustable height.
- Locking screw to avoid damage during transport and installation.

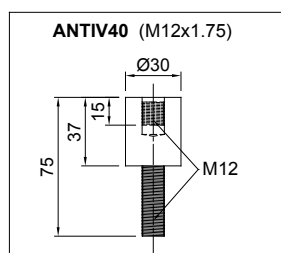
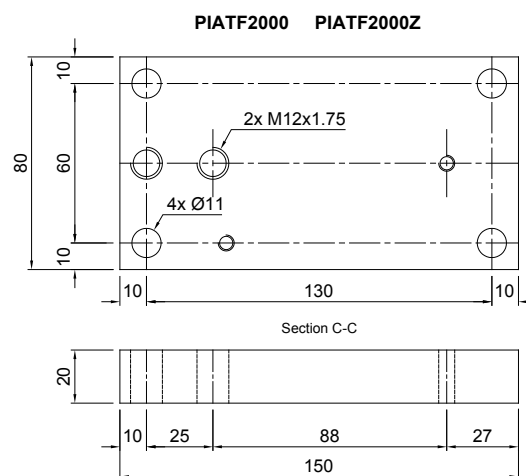
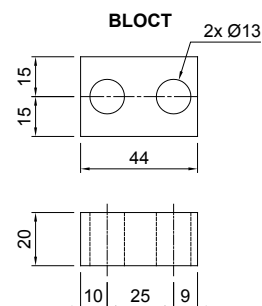
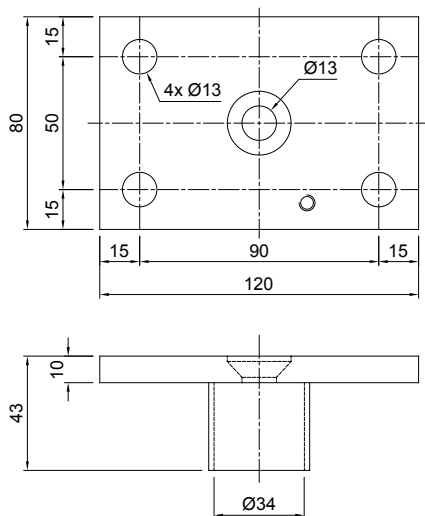
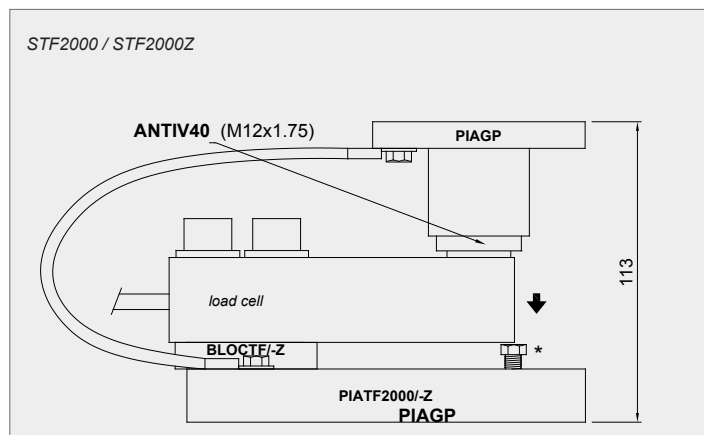
# STF2000 / 2000Z

## MOUNTING KIT for SHEAR BEAM load cells

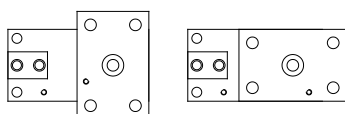
# STAD

### DIMENSIONS AND TECHNICAL SPECIFICATIONS

- During the transport and installation the lock (\*) must touch under the load cell. After installation, move the lock away from the load cell.
- Interconnect the plates to the earthing.
- In case of structure with four-point support, if one-point does not touch the compression joint, you must proceed to insert a shim before fixing the bolts.



#### POSSIBLE PPV UPER PLATE POSITIONS



#### MOUNTING AND PLACING STRUCTURE

