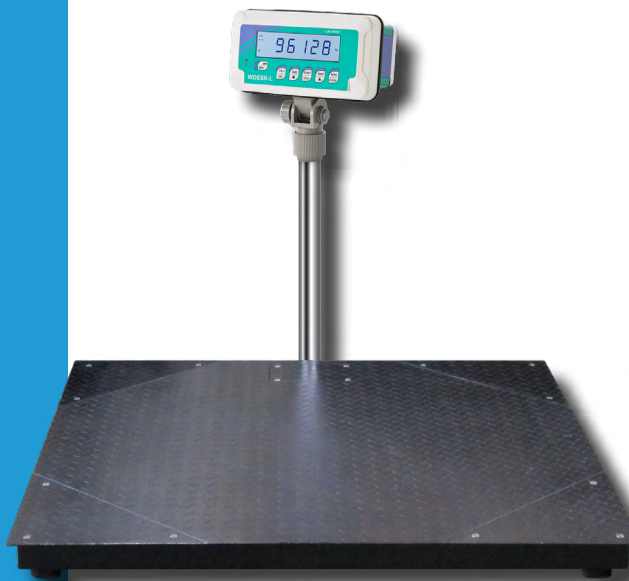
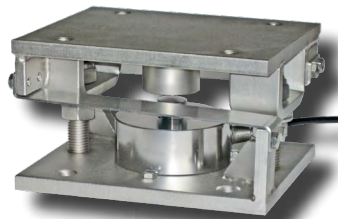
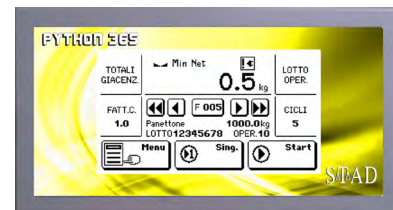


STATIC WEIGHING TECHNICAL CATALOGUE



LOAD CELLS AND MOUNTING KITS

WEIGHT TRANSMITTERS

WEIGHT INDICATORS

REMOTE DISPLAYS AND ACCESSORIES

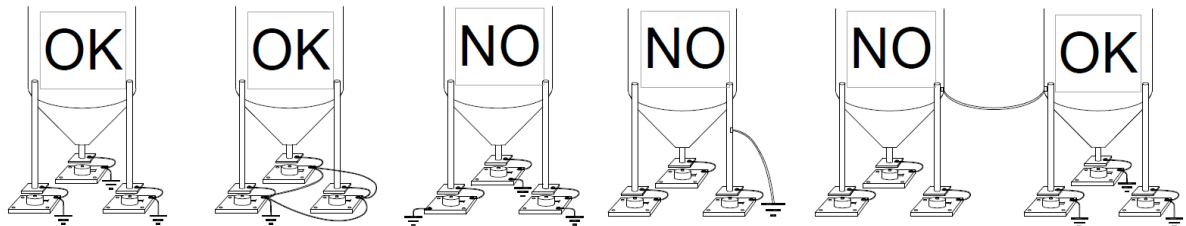
WEIGHING PLATFORMS

INSTRUMENTS & LOAD CELLS

RECOMMENDATIONS FOR CORRECT INSTALLATION

RECOMMENDATIONS FOR CORRECT INSTALLATION OF THE LOAD CELLS

- **INSTALLING LOAD CELLS** : The load cells must be placed on rigid and stable structures; it is important to use the mounting kits for load cells to compensate for misalignment of the support plates.
- **PROTECTION OF THE CABLE OF THE CELLS** : Use water-proof sheathes and joints in order to protect the cables of the cells.
- **MECHANICAL RESTRAINTS (pipes, etc.)** : When pipes are present, we recommend the use of hoses and flexible couplings with open mouthpieces with rubber protection; in case of hard pipes, place the pipe support or anchor bracket as far as possible from the weighed structure (at least 40 times the diameter of the pipe).
- **LOAD CELLS IN PARALLEL** : Carry out the parallel connection of the cells by using a water-proof junction box with terminal box. The junction boxes are provided with up to 8 cable glands plus one cable gland for cable exit. The extension cables, connected to the load cells, must be shielded, led alone into the piping or trough and laid as far as possible from the power cables (in case of 4-wire connections: use cables with 4 x 1 sq.mm minimum cross-section).
- **WELDING** : Avoid welding with the load cells already installed. If this cannot be avoided, place the welder ground clamp close to the required welding point to prevent sending current through the load cell body.
- **WIND - KNOCKS - VIBRATIONS** : The use of mounting kits is strongly recommended to compensate for misalignment of the support plates and especially to achieve optimal accuracy and reliability. To ensure the stability of the structure the system designer must consider further contrivances according to the following conditions: Knocks and vibrations; Seismic conditions; Hardness of support structure; Wind effect.
- **EARTHING THE WEIGHING SYSTEM** : By means of a copper wire with suitable cross-section, connect the cell upper support plate with the lower support plate, then connect all the lower plates to a single earthing system. Electrostatic charges accumulated because of the product rubbing against the pipes and the weighed container walls are discharged to the ground without going through or damaging the load cells. Failure to implement a proper earthing system might not affect the operation of the weighing system; this, however, does not rule out the possibility that the cells and connected instrument may become damaged in the future. It is forbidden to ensure earthing system continuity by using metal parts contained in the weighed structure.



RECOMMENDATIONS FOR CORRECT INSTALLATION OF WEIGHING INSTRUMENTS

- The entry into the cable board of cells must be independent (on one side or the other of the board) and directly connected to the terminal board of the device without breaking by bearing terminal boards or passing through troughs containing other cables.
- Use the "RC" filters on the instrument-driven coils of the remote control switches.
- Avoid inverter, if inevitable, use filters and separate with sheets.
- In case of 230Vac supply, use a 380/230Vac transformer avoiding to use the 380Vac phase and the neutral.
- The installer of the board is responsible for securing the electrical safety of the indicators.
- It is a good norm to let the indicators always switch on to prevent the formation of condensation.

LOAD CELLS CHECK

- **LOAD CELLS RESISTANCE MEASURE BY MEANS OF DIGITAL MULTIMETER**
- Disconnect the load cells from the instrument (or amplifier), make sure that there is not any moistness caused by condensed water or infiltration of water. If so, keep cleaning the system or replace it, if necessary.
- The value between the positive signal wire and the negative signal wire must be equal or similar to the one indicated in the load cell data sheet (output resistance).
- The value between the positive excitation wire and the negative excitation wire must be equal or similar to the one indicated in the load cell data sheet (input resistance).
- The insulation value between the shield and any other cell wire and between any other cell wire and the body of the load cell must be higher than 20 Mohm (mega ohms).
-
- **LOAD CELLS VOLTAGE MEASURE BY MEANS OF DIGITAL MULTIMETER**
- Take out the load cell to be tested from underneath the container, or alternatively, lift the container support.
- Make sure that the excitation of two wires of the cell connected to the instruments (or amplifier) is 5Vdc +/- 3 %.
- Measure the signal between the positive and the negative signal wires directly connected to the multimeter, make sure that there is a signal included between 0 and +/- 0.5mV (thousandth of a Volt).
- Load the cell and make sure that there is a signal increment.
- IN CASE ONE OF THE ABOVE CONDITIONS IS NOT MET, PLEASE CALL THE TECHNICAL ASSISTANCE SERVICE.
-

LOAD CELLS AND MOUNTING KITS

OFF-CENTER LOAD CELL SPEC	4
BENDING BEAM LOAD CELL SFCK	6
BENDING BEAM LOAD CELL SFCOL	8
MOUNTING KITS FOR BENDING BEAM LOAD CELL STFC-GP	10
SHEAR BEAM LOAD CELL SFTP	12
MOUNTING KITS FOR SHEAR BEAM LOAD CELL STF2000 / 2000Z	14
COMPRESSION LOAD CELL SCBL	16
COMPRESSION LOAD CELL SCBX	18
MOUNTING KITS FOR COMPRESSION LOAD CELL SV-Serie	20
JUNCTION BOXES J-BOX	22

WEIGHT TRANSMITTERS

ON-SITE WEIGHT TRANSMITTERS TLS Serie	24
BACK PANEL MOUNTING WEIGHT TRANSMITTERS TLB Serie	26

WEIGHT INDICATORS

WEIGHT INDICATOR FOR LOCAL PANEL W100 Serie	28
WEIGHT INDICATOR WITH FORMULA MANAGEMENT W200 Serie	30
WEIGHING UNIT WITH GUIDED LOAD MANAGEMENT PYTHON 365	32

REMOTE DISPLAYS AND ACCESSORIES

LARGE REMOTE DISPLAY WITH LIGHTS INDICATOR RIP2x8VGR	34
LARGE REMOTE DISPLAY WITH LIGHTS INDICATOR RIP2x10VGR	35
LARGE DIGIT REMOTE DISPLAY RIP60 / RIP100 / RIP160	36
PRINTER STAVP-RS232	37

WEIGHING PLATFORMS

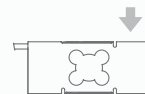
SINGLE CELL PLATFORM ACN	38
STAINLESS STEEL SINGLE CELL PLATFORM AILN	40
PLATFORM WITH 4 CELLS P Serie	42
STAINLESS STEEL PLATFORM WITH 4 LOAD CELLS P-INOX Serie	44
WEIGHT INDICATOR FOR PLATFORMS WDESKB-L / WINOX-L	46

SPEC

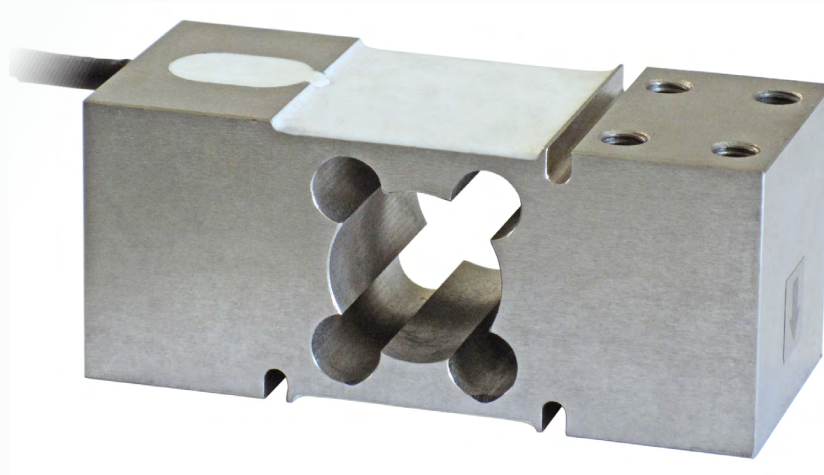
SINGLE-POINT LOAD CELL for platforms 600x600 mm



Manufactured according to OIML R60 standards



Capacity from 75 kg to 500 kg



- AISI 420 STAINLESS STEEL
- COMBINED ERROR $\leq \pm 0.02\%$
- PROTECTION CLASS IP67

CAPACITY	kg	IECEx	Ex	EAC	PLATFORM DIMENSION (mm)	NET WEIGHT OF LOAD CELL (kg)	CODE
75		•	•	•	600 x 600	1.8	SPEC75
150		•	•	•	600 x 600	1.8	SPEC150
300		•	•	•	600 x 600	2	SPEC300
500		•	•	•	600 x 600	2	SPEC500

ON REQUEST

CERTIFICATIONS

CERTIFICATIONS ON REQUEST



ATEX II 1GD (zone 0-1-2-20-21-22)



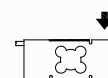
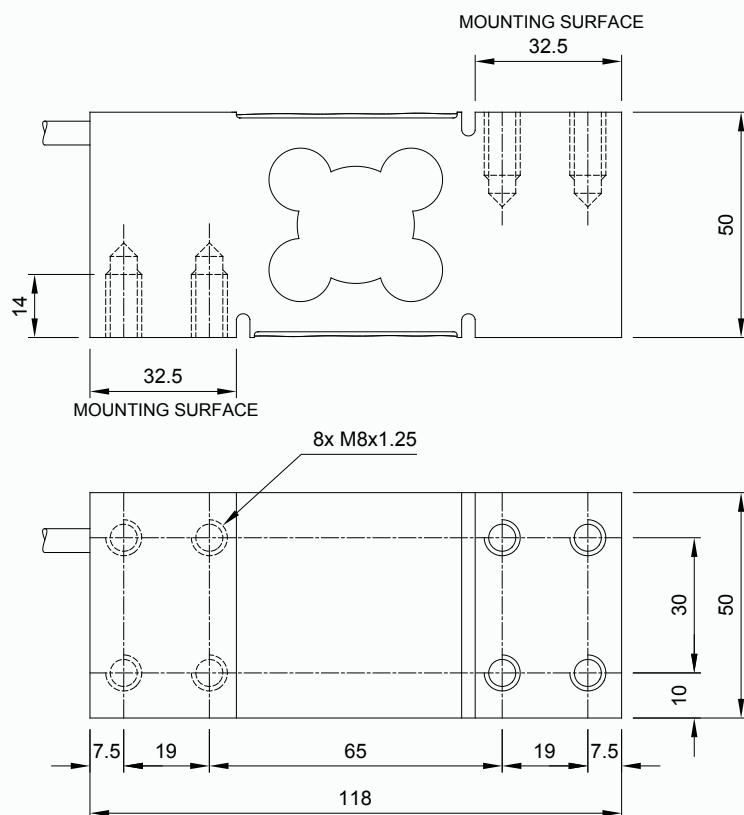
IECEx II 1GD (zone 0-1-2-20-21-22)



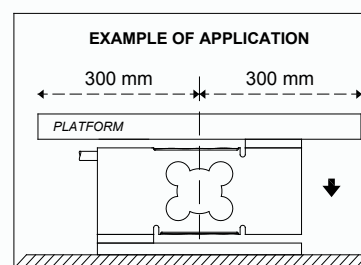
Complies with the Eurasian Custom Union regulations (Russia, Belarus, Kazakhstan)

SINGLE-POINT LOAD CELL for platforms 600x600 mm

DIMENSIONS (mm)



EXAMPLE OF APPLICATION



TECHNICAL FEATURES

Material	AISI 420 stainless steel		
Nominal load (E max)	75 - 150 - 300 - 500 kg		
Combined error	$\leq \pm 0.02\%$		
Protection class	IP67		
Rated output	2 mV/V $\pm 10\%$	Input resistance	385 $\Omega \pm 30$
Temperature effect on zero	0.002% $^{\circ}\text{C}$	Output resistance	350 $\Omega \pm 5$
Temperature effect on span	0.002% $^{\circ}\text{C}$	Zero balance	$\pm 1\%$
Compensated temperature range	-10 $^{\circ}\text{C}$ / +40 $^{\circ}\text{C}$	Insulation resistance	>5000 M Ω
Operating temperature range	-20 $^{\circ}\text{C}$ / +60 $^{\circ}\text{C}$	Safe overload (% of full scale)	150%
Creep at nominal load in 30 minutes	0.02%	Ultimate overload (% of full scale)	300%
Max supply voltage without damage	15 V	Deflection at nominal load	0.3 mm

ELECTRICAL CONNECTIONS

Cable length	3 m
Cable diameter	5 mm
Cores	4/6 x 0.20 mm ²



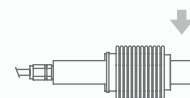
SFCK

BENDING BEAM LOAD CELLS

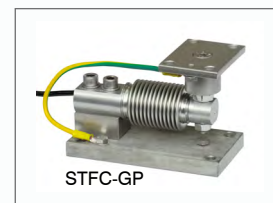


Manufactured according to OIML R60 standards

Capacity from 5 kg to 10 kg



MOUNTING KITS



- 17-4 PH STAINLESS STEEL
- COMBINED ERROR $\leq \pm 0.02\%$
- PROTECTION CLASS IP68

CAPACITY	kg	IECEx	Ex	EAC	NET WEIGHT OF LOAD CELL (kg)	CODE
	5	•	•		0.4	SFCK5
	10	•	•		0.4	SFCK10
		ON REQUEST				

CERTIFICATIONS

CERTIFICATIONS ON REQUEST



ATEX II 1GD (zone 0-1-2-20-21-22)

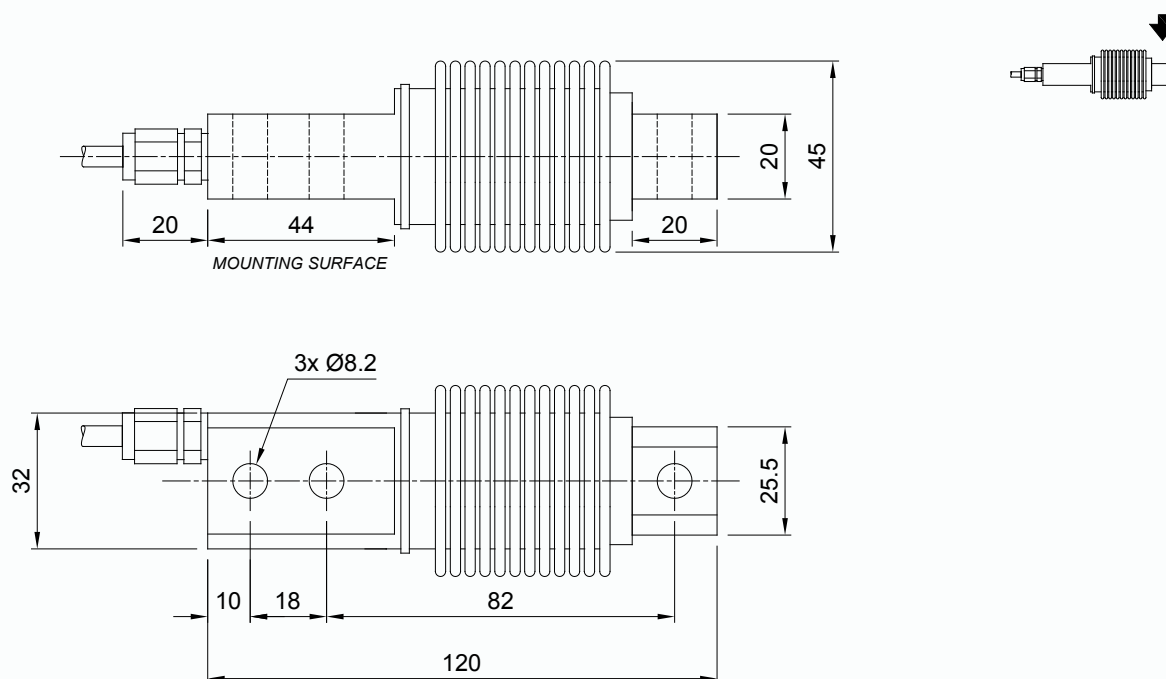


IECEx II 1GD (zone 0-1-2-20-21-22)



Complies with the Eurasian Custom Union regulations (Russia, Belarus, Kazakhstan)

DIMENSIONS (mm)

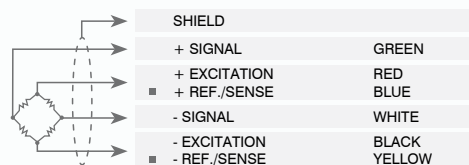


TECHNICAL FEATURES

Material	17-4 PH stainless steel		
Nominal load (E max)	5 - 10 kg		
Combined error	$\leq \pm 0.02\%$		
Protection class	IP68		
Rated output	2 mV/V $\pm 1\%$	Input resistance	400 $\Omega \pm 20$
Temperature effect on zero	0.002% $^{\circ}\text{C}$	Output resistance	352 $\Omega \pm 3$
Temperature effect on span	0.002% $^{\circ}\text{C}$	Zero balance	$\pm 2\%$
Compensated temperature range	-10 $^{\circ}\text{C}$ / +40 $^{\circ}\text{C}$	Insulation resistance	>5000 M Ω
Operating temperature range	-30 $^{\circ}\text{C}$ / +65 $^{\circ}\text{C}$	Safe overload (% of full scale)	150%
Creep at nominal load in 30 minutes	0.02%	Ultimate overload (% of full scale)	200%
Max supply voltage without damage	15 V	Deflection at nominal load	0.4 mm

ELECTRICAL CONNECTIONS

Cable length	3 m
Cable diameter	4 mm
Cores	4/6 x 0.22 mm ²

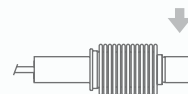


SFCOL

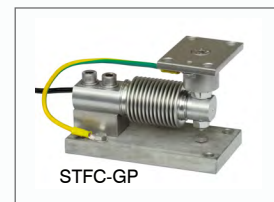
BENDING BEAM LOAD CELLS



Capacity from 20 kg to 500 kg



MOUNTING KITS



- 17-4 PH STAINLESS STEEL
- COMBINED ERROR $\leq \pm 0.02\%$ (0.017% C4)
- PROTECTION CLASS IP68

CAPACITY	kg	ACCURACY CLASS		OIML	IECEx	Ex	EAC	NTEP	NET WEIGHT OF LOAD CELL (kg)	CODE
20		C3	C4		•	•	—		0.4	SFCOL20
50		C3	C4		•	•	•		0.4	SFCOL50
100		C3	C4		•	•	•		0.4	SFCOL100
200		C3	C4		•	•	•		0.4	SFCOL200
350		C3	C4		•	•	•		0.4	SFCOL350
500		C3	C4		•	•	•		0.4	SFCOL500
ON REQUEST										

CERTIFICATIONS



OIML R60 C3

CERTIFICATIONS ON REQUEST



ATEX II 1GD (zone 0-1-2-20-21-22)



IECEx II 1GD (zone 0-1-2-20-21-22)



OIML R60 C4

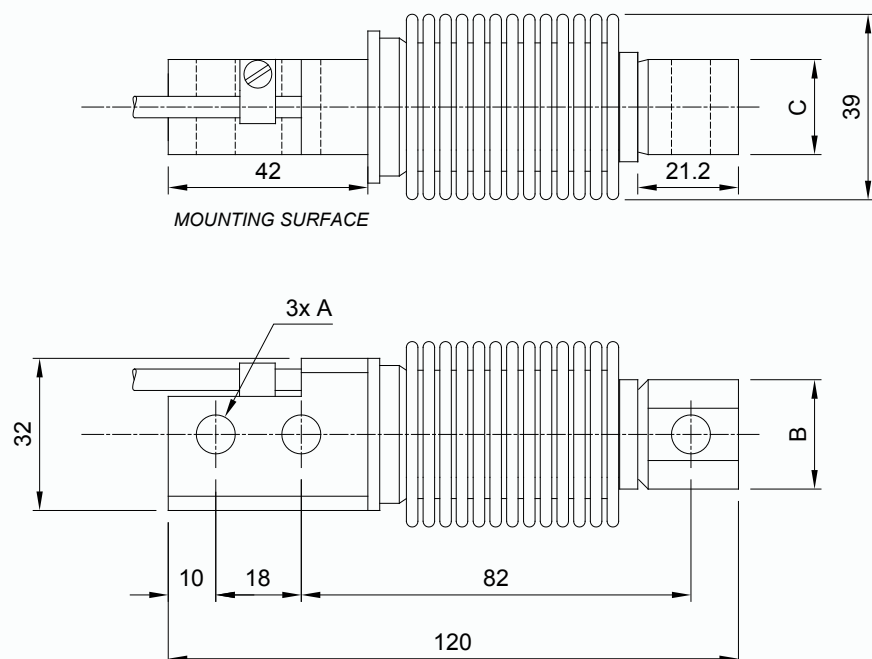


Complies with the Eurasian Custom Union regulations (Russia, Belarus, Kazakhstan)



NTEP - compliant to the metrological standards of United States and Canada (capacity from 50 to 500 kg)

DIMENSIONS (mm)



	A	B	C
20-200kg	Ø8.2	23	20
350-500kg	Ø10.3	24	19

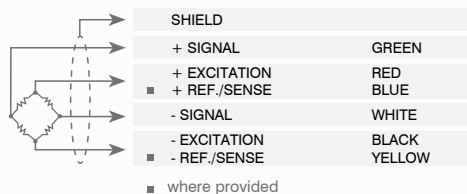
TECHNICAL FEATURES

Material			17-4 PH stainless steel	
OIML R60 Accuracy class • Verification intervals			C3 • 3000	C4 • 4000
Nominal load (E max)			20 - 50 - 100 - 200 - 350 - 500 kg	
Minimum verification interval (V min)			E max / 10000	E max / 15000
Combined error			≤ ±0.02%	≤ ±0.017%
Protection class			IP68	
Rated output	2 mV/V ±1%	*	Input resistance	460 Ω ±50
Temperature effect on zero	0.002% °C		Output resistance	350 Ω ±3.5
Temperature effect on span	0.0014% °C		Zero balance	≤ ±1%
Compensated temperature range	-10 °C / +40 °C		Insulation resistance	≥5000 MΩ
Operating temperature range	-35 °C / +65 °C		Safe overload (% of full scale)	150%
Creep at nominal load in 30 minutes	0.02%		Ultimate overload (% of full scale)	300%
Max supply voltage without damage	18 V		Deflection at nominal load	0.4 mm

* Calibrated current output

ELECTRICAL CONNECTIONS

Cable length	3 m
Cable diameter	5 mm
Cores	4/6 x 0.22 mm ²

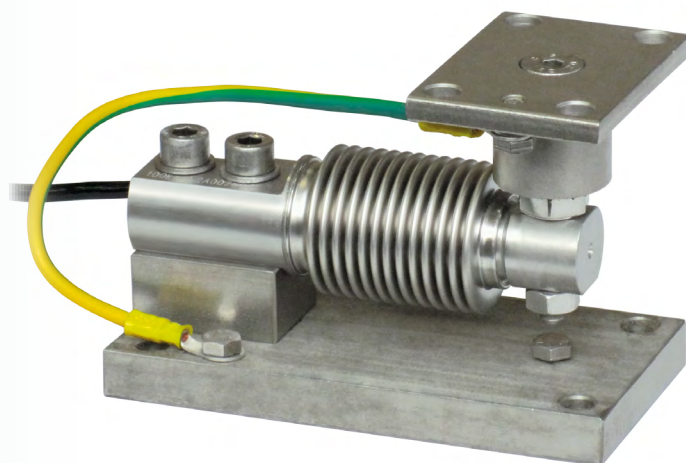


STFC-GP

MOUNTING KIT for BENDING BEAM load cells

Series load cells: **SFCK - SFCOL**

Application range from 5 to 500 kg



MAX STATIC LOAD kg	FOR LOAD CELLS	NET WEIGHT OF MOUNTING KIT (kg)	CODE
500	SFCK - SFCOL	1.3	STFCGP

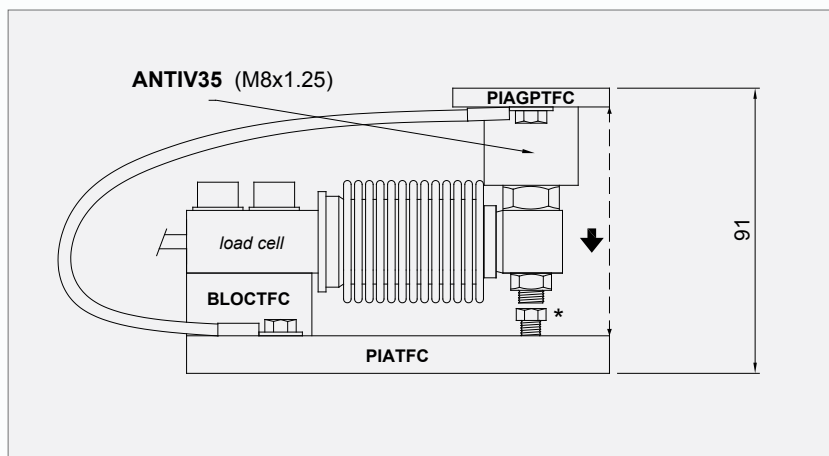
Load cell not included.

DESCRIPTION

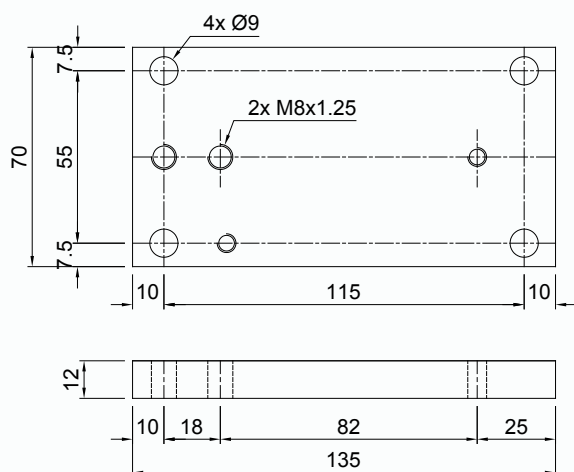
- Upper plate with a compression joint in AISI 304 stainless steel and rubber.
- Lower plate and block in AISI 304 stainless steel.
- Misalignment compensation of the support plates structure.
- Adjustable height.
- Locking screw to avoid damage during transport and installation.

DIMENSIONS AND TECHNICAL SPECIFICATIONS

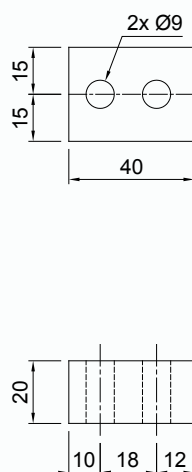
- During the transport and installation the lock (*) must touch under the load cell. After installation, move the lock away from the load cell.
- Interconnect the lower plates to the earthing.
- In case of structure with four-point support, if one-point does not touch the compression joint, you must proceed to insert a shim before fixing the bolts.



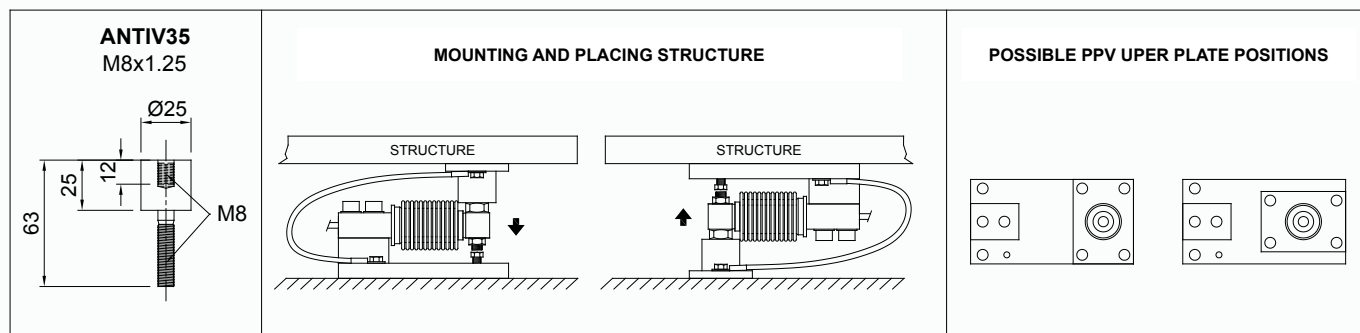
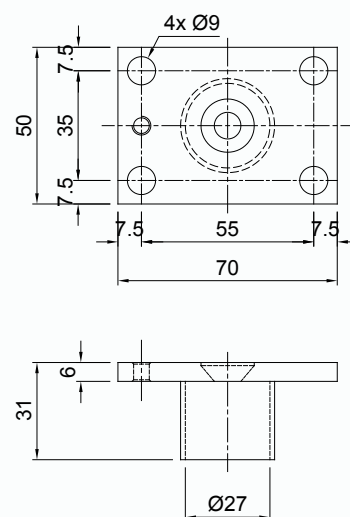
PIATFC



BLOCTFC



PIAGPTFC



SFTP

SHEAR BEAM AND BENDING LOAD CELLS



SHEAR BEAM: capacity from 500 kg to 10000 kg



BENDING BEAM: capacity from 75 kg to 300 kg



- AISI 420 STAINLESS STEEL
- COMBINED ERROR $\leq \pm 0.02\%$
- PROTECTION CLASS IP67, IP68

CAPACITY	kg	ACCURACY CLASS	OIML	IECEx	Ex	EAC	NET WEIGHT OF LOAD CELL (kg)	CODE
75		C3		•	•		0.9	SFTP75
150		C3		•	•		0.9	SFTP150
300		C3		•	•		0.9	SFTP300
500		C3		•	•		0.9	SFTP500
750		C3		•	•		0.9	SFTP750
1000		C3		•	•		0.9	SFTP1000
1200		C3		•	•		0.9	SFTP1200
1500		C3		•	•		0.9	SFTP1500
2000		C3		•	•		0.9	SFTP2000
3000		—		•	•		1.6	SFTP3000
5000		—		•	•		1.6	SFTP5000
10000		—		•	•		3.8	SFTP10000

ON REQUEST

CERTIFICATIONS



OIML R60 C3 (see capacities table)

CERTIFICATIONS ON REQUEST



ATEX II 1GD (zone 0-1-2-20-21-22)



IECEx II 1GD (zone 0-1-2-20-21-22)



Complies with the Eurasian Custom Union regulations (Russia, Belarus, Kazakhstan)

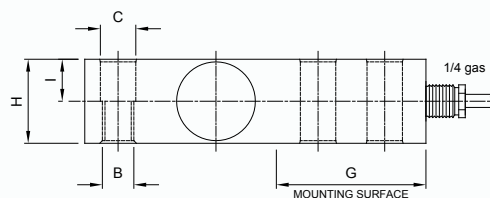
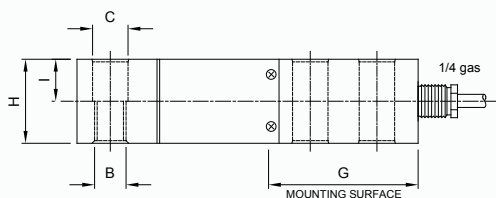
SHEAR BEAM AND BENDING LOAD CELLS

DIMENSIONS (mm)

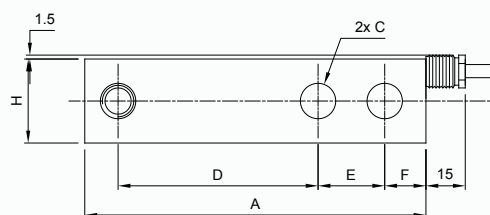
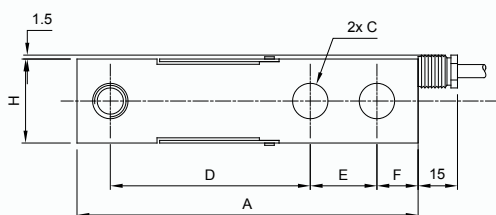
75 - 300 kg



500 - 10000 kg



	75 - 2000 kg	3000 - 5000 kg	10000 kg
A	130	171.5	222.3
B	M12x1.75	M20x2.5	M24x2
C	Ø 13.5	Ø 21	Ø 26.2
D	76.2	95.3	123.8
E	25.4	38.1	50.8
F	15.7	19.1	25.4
G	52	72.5	102
H	32	38	50.8
I	16	19	25.4

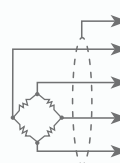


TECHNICAL FEATURES

Material	AISI 420 stainless steel	
OIML R60 Accuracy class • Verification intervals	C3 • 3000	-
Nominal load (E max)	75 -150 -300- 500 - 750 kg 1000 - 1200 - 1500 - 2000 kg	3000 - 5000 - 10000 kg
Minimum verification interval (V min)	E max / 15000	-
Combined error	$\leq \pm 0.02\%$	
Protection class	IP67 (75 - 300 kg), IP68 (500 - 10000 kg)	
Rated output	2 mV/V $\pm 0.1\%$	Input resistance 385 $\Omega \pm 10$
Temperature effect on zero	0.002% $^{\circ}\text{C}$	Output resistance 350 $\Omega \pm 3$
Temperature effect on span	0.0012% $^{\circ}\text{C}$	Zero balance $\pm 2\%$
Compensated temperature range	-10 $^{\circ}\text{C}$ / +40 $^{\circ}\text{C}$	Insulation resistance $\geq 5000 \text{ M}\Omega$
Operating temperature range	-20 $^{\circ}\text{C}$ / +70 $^{\circ}\text{C}$	Safe overload (% of full scale) 150%
Creep at nominal load in 30 minutes	0.03%	Ultimate overload (% of full scale) 200%
Max supply voltage without damage	15 V	Deflection at nominal load 0.4 mm

ELECTRICAL CONNECTIONS

Cable length	5 m (75 - 5000 kg) 10 m (10000 kg)
Cable diameter	5 mm
Cores	4/6 x 0.25 mm ²



SHIELD	
+ SIGNAL	GREEN
+ EXCITATION	RED
+ REF./SENSE	BLUE
- SIGNAL	WHITE
- EXCITATION	BLACK
- REF./SENSE	YELLOW

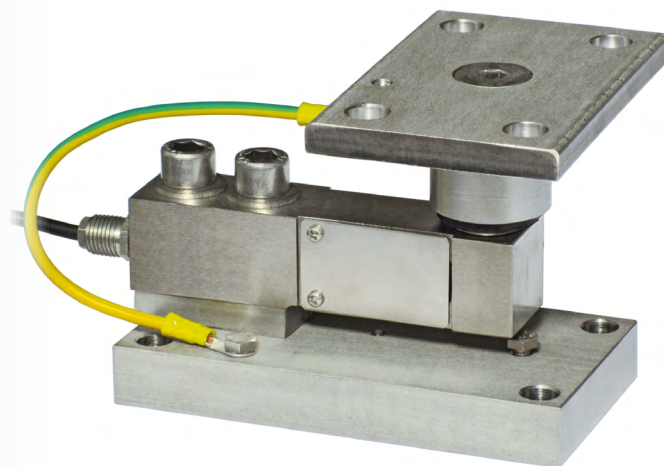
■ where provided

STF2000 / 2000Z

MOUNTING KIT for SHEAR BEAM load cells

Series load cells: **SFTP**

Application range from 75 to 2000 kg



MOUNTING KIT MODEL	FOR LOAD CELLS	NET WEIGHT OF MOUNTING KIT (kg)	CODE	MATERIAL
STF2000	SFTP	2.9	STF2000	STAINLESS STEEL AISI 304
STF2000Z	SFTP	2.9	STF2000Z	GALVANIZED STEEL

Load cell not included.

DESCRIPTION

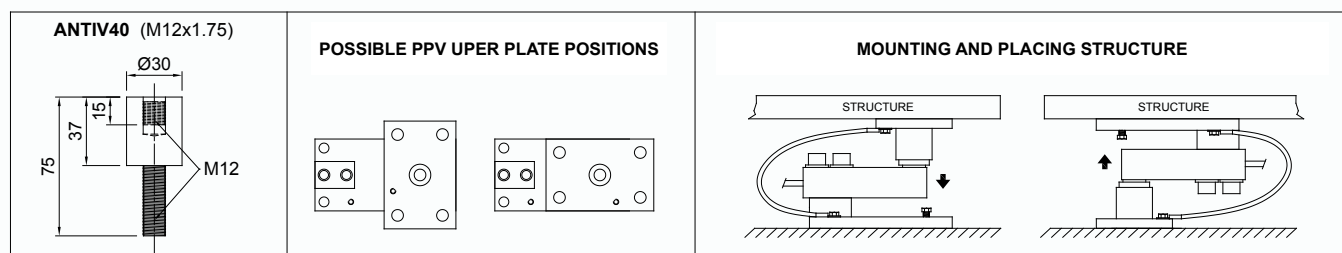
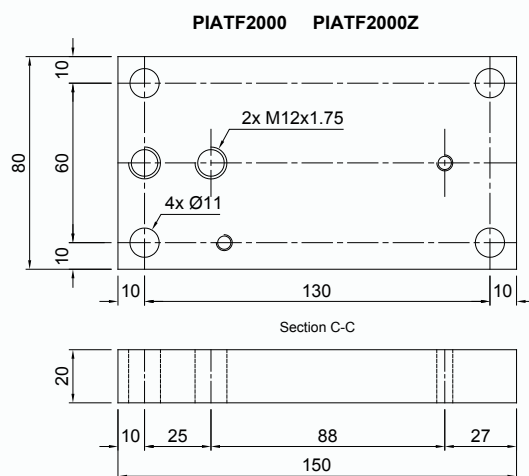
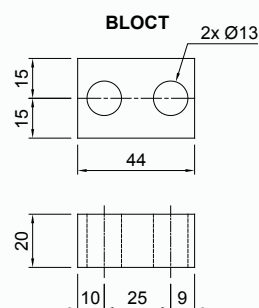
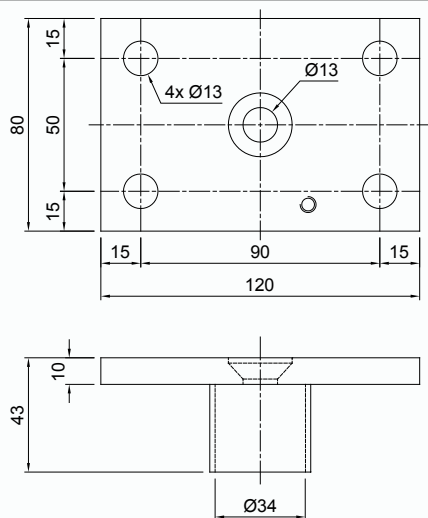
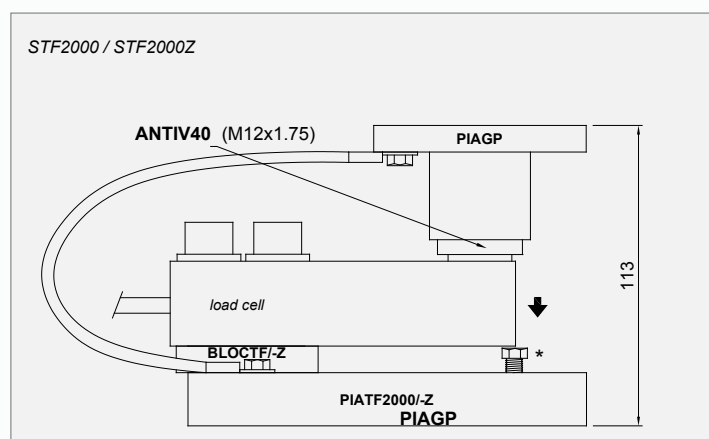
- Upper plate with a compression joint in AISI 304 stainless steel and rubber.
- Lower plate and block in AISI 304 stainless steel (STF500, STF2000) or in galvanized steel (STF2000Z).
- Misalignment compensation of the support plates structure.
- Adjustable height.
- Locking screw to avoid damage during transport and installation.

STF2000 / 2000Z

MOUNTING KIT for SHEAR BEAM load cells

DIMENSIONS AND TECHNICAL SPECIFICATIONS

- During the transport and installation the lock (*) must touch under the load cell. After installation, move the lock away from the load cell.
- Interconnect the plates to the earthing.
- In case of structure with four-point support, if one-point does not touch the compression joint, you must proceed to insert a shim before fixing the bolts.

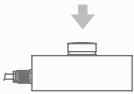


SCBL

COMPRESSION LOAD CELLS - LOW PROFILE



Capacity from 250 kg to 12500 kg



MOUNTING KITS



- 17-4 PH STAINLESS STEEL (on request AISI 420 stainless steel version; not OIML approved)
- COMBINED ERROR $\leq \pm 0.03\%$ (0.02% C3)
- PROTECTION CLASS IP68

CAPACITY	kg	ACCURACY CLASS						NET WEIGHT OF LOAD CELL (kg)	CODE
250		—	—	—	•	•	•	1.1	SCBL250
500		—	—	—	•	•	•	1.1	SCBL500
1000		—	—	—	•	•	•	1.1	SCBL1000
2500		C2	C3	—	•	•	•	1.1	SCBL2500
5000		C2	C3	—	•	•	•	1.1	SCBL5000
7500		C2	C3	—	•	•	•	1.1	SCBL7500
10000		C2	C3	—	•	•	•	1.1	SCBL10000
12500		—	C3 *	—	•	•	•	1.6	SCBL12500

ON REQUEST

(*) Except for the capacity of 12500kg, which is already OIML R60 C3 approved

COMPRESSION LOAD CELLS - LOW PROFILE

CERTIFICATIONS



OIML R60 C2 / C3 (see capacities table)

CERTIFICATIONS ON REQUEST



Declaration of conformity + IP69K marking protection rating

Water protection when cleaning high pressure / steam jet (Test: pressurized hot water is sprayed from a distance of 150 mm).
Water pressure 100 bar; temperature 80 °C; test duration 250 seconds (Reference standard DIN 40050-9).

Calibration report (ACCREDIA LAT traceability)



ATEX II 1GD (zone 0-1-2-20-21-22)



IECEx II 1GD (zone 0-1-2-20-21-22)

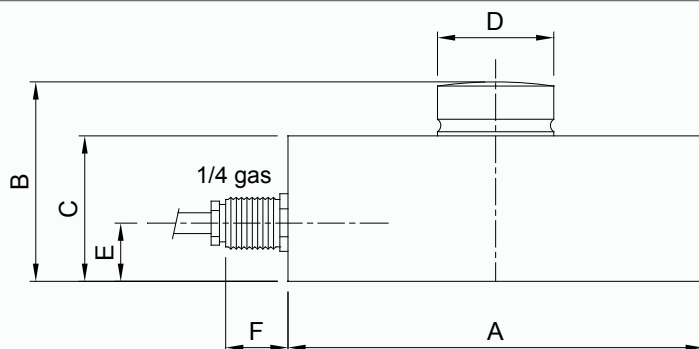


OIML R60 C3 (see capacities table)

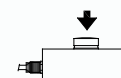


Complies with the Eurasian Custom Union regulations (Russia, Belarus, Kazakhstan)

DIMENSIONS (mm)



	250
kg	12500
A	Ø82
B	44
C	32
D	Ø22
E	14
F	15



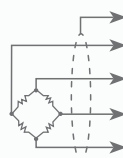
TECHNICAL FEATURES

Material	17-4 PH stainless steel		
OIML R60 Accuracy class • Verification intervals	–	C2 • 2000	C3 • 3000
Nominal load (E max)	250 - 500 - 1000	2500 - 5000 kg 7500 - 10000 kg	2500 - 5000 - 7500 kg 10000 - 12500 kg
Minimum verification interval (V min)	-	E max / 15000	
Combined error	≤ ±0.03%	≤ ±0.03%	≤ ±0.02%
Protection class	IP68		
Rated output	2 mV/V ±0.1%	Input resistance	700 Ω ±10
Temperature effect on zero	0.005% °C	Output resistance	700 Ω ±10
Temperature effect on span	0.003% °C	Zero balance	±1%
Compensated temperature range	-10 °C / +50 °C	Insulation resistance	>10000 MΩ
Operating temperature range	-20 °C / +70 °C	Safe overload (% of full scale)	150%
Creep at nominal load after 4 hours	0.03%	Ultimate overload (% of full scale)	300%
Max supply voltage without damage	15 V	Deflection at nominal load	0.4 mm

ELECTRICAL CONNECTIONS

Cable length	▲ 5 m (250-10000 kg) 10 m (12500-100000 kg)
Cable diameter	5 mm
Cores	4/6 x 0.25 mm²

▲ On request: 10 m long cable version



SHIELD	
+ SIGNAL	GREEN
+ EXCITATION	RED
+ REF./SENSE	BLUE
- SIGNAL	WHITE
- EXCITATION	BLACK
- REF./SENSE	YELLOW

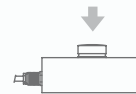
■ where provided

COMPRESSION LOAD CELLS - LOW PROFILE



Manufactured according to OIML R60 standards

Capacity from 15000 kg to 50000 kg



MOUNTING KITS



SV10000 - SV10275







SV15000 - SV30000 -
SV100000

- 17-4 PH STAINLESS STEEL
- COMBINED ERROR $\leq \pm 0.03\%$
- PROTECTION CLASS IP68

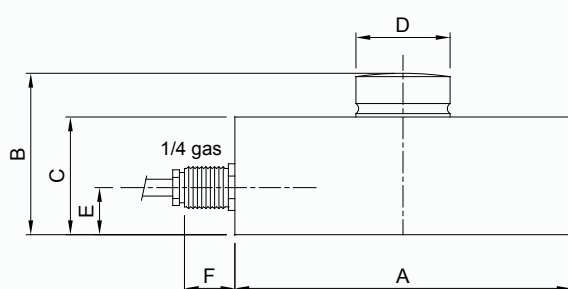
CAPACITY	kg				NET WEIGHT OF LOAD CELL (kg)	CODE
15000		•	•		1.4	SCBX15000
30000		•	•		2.2	SCBX30000
50000		•	•		3.8	SCBX50000
<div>ON REQUEST</div>						

CERTIFICATIONS

CERTIFICATIONS ON REQUEST

	Calibration report (ACCREDIA LAT traceability)
	ATEX II 1GD (zone 0-1-2-20-21-22)
	IECEx II 1GD (zone 0-1-2-20-21-22)
	Complies with the Eurasian Custom Union regulations (Russia, Belarus, Kazakhstan)

DIMENSIONS (mm)



kg	15000	30000	50000
A	Ø82	Ø100	Ø126
B	44	48	54
C	32	35	40
D	Ø22	Ø28	Ø35
E	14	14	14
F	15	15	15

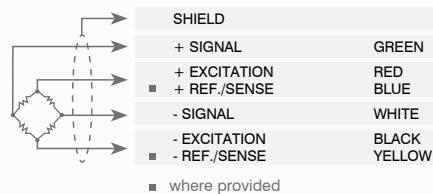


TECHNICAL FEATURES

Material	17-4 PH stainless steel		
Nominal load (E max)	15000 - 30000 - 50000 kg		
Combined error	$\leq \pm 0.035\%$		
Protection class	IP68		
Rated output	2 mV/V $\pm 0.1\%$	Input resistance	700 $\Omega \pm 5$
Temperature effect on zero	0.005% $^{\circ}\text{C}$	Output resistance	700 $\Omega \pm 5$
Temperature effect on span	0.003% $^{\circ}\text{C}$	Zero balance	$\pm 1\%$
Compensated temperature range	-10 $^{\circ}\text{C}$ / +50 $^{\circ}\text{C}$	Insulation resistance	>10000 M Ω
Operating temperature range	-20 $^{\circ}\text{C}$ / +70 $^{\circ}\text{C}$	Safe overload (% of full scale)	150%
Creep at nominal load in 30 minutes	0.03%	Ultimate overload (% of full scale)	300%
Max supply voltage without damage	15 V	Deflection at nominal load	0.4 mm

ELECTRICAL CONNECTIONS

Cable lenght	10 m
Cable diameter	5 mm
Cores	4/6 x 0.25 mm ²

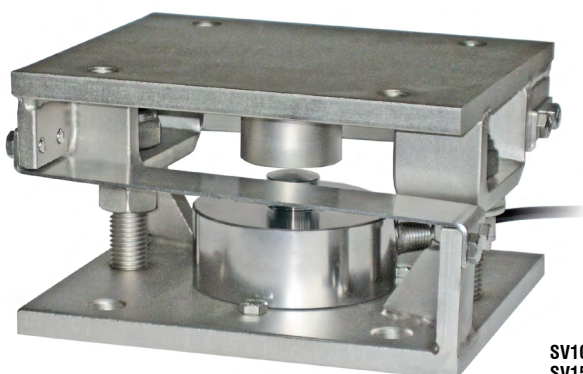


SV Serie

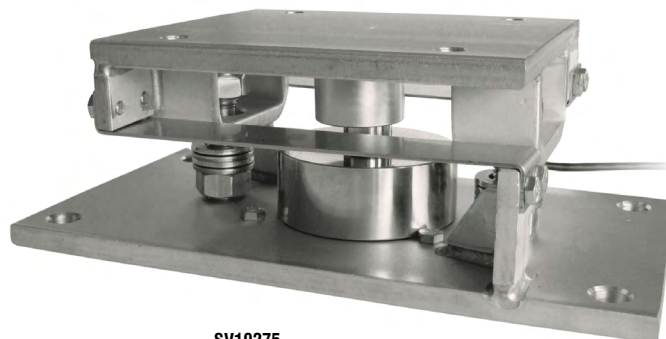
MOUNTING KIT for COMPRESSION-LOW PROFILE load cells

Series load cells: **SCBL - SCBX**

Application range from 250 to 50.000 kg



SV10000
SV15000
SV30000



SV10275

MODEL	FOR LOAD CELLS	NET WEIGHT OF MOUNTING KIT (kg)
SV10.000	SCBL (250 ÷ 12500 kg) - SCBX (15000 kg)	5.7
SV10.275	SCBL (250 ÷ 12500 kg) - SCBX (15000 kg)	6.9
SV15.000	SCBX 30000 kg	5.7
SV30.000	SCBX 50000 kg	6.9

Load cell not included.

DESCRIPTION

- AISI 304 stainless steel upper and lower plates.
- AISI 304 stainless steel laminas against lateral forces.
- Anti-tilt system consists of two threaded bars with self-locking nut.

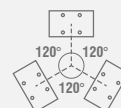
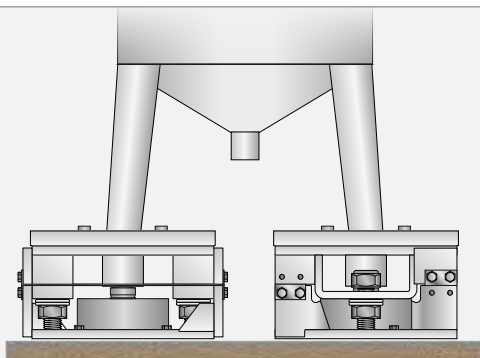
SV10000: 6 kg
SV10275: 7 kg
SV15000: 9 kg
SV30000: 17 kg

DIMENSIONS AND TECHNICAL SPECIFICATIONS

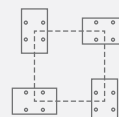
Upper and lower plates [2] must rest completely on not deformable surfaces. To ensure the stability of the structure, the system designer must predict any further precaution against side shifts and anti-tilt in function of: knocks and vibrations, wind effect, seismic conditions and hardness of support structure.

- Install the weighed system using only the mounting kit without the load cell [1] and inserting in its place a piece of pipe (1-2 mm higher than the load cell).
- To finish the installation (weldings, etc.), remove the piece of pipe and then removing the bolts to fix the the load cell [7] insert the load cell [1] in mounting kit.
- Connect lower and upper plates [2] to the earthing system then loosen nuts [5]; erify that the threaded bar [4] slides into the hole; turn anti-tilt nuts [6] to a distance of 1 mm from plate.
- Tighten the three bolts to fix the load cell [7].

Example of weighing structures subject to knocks or wind effect

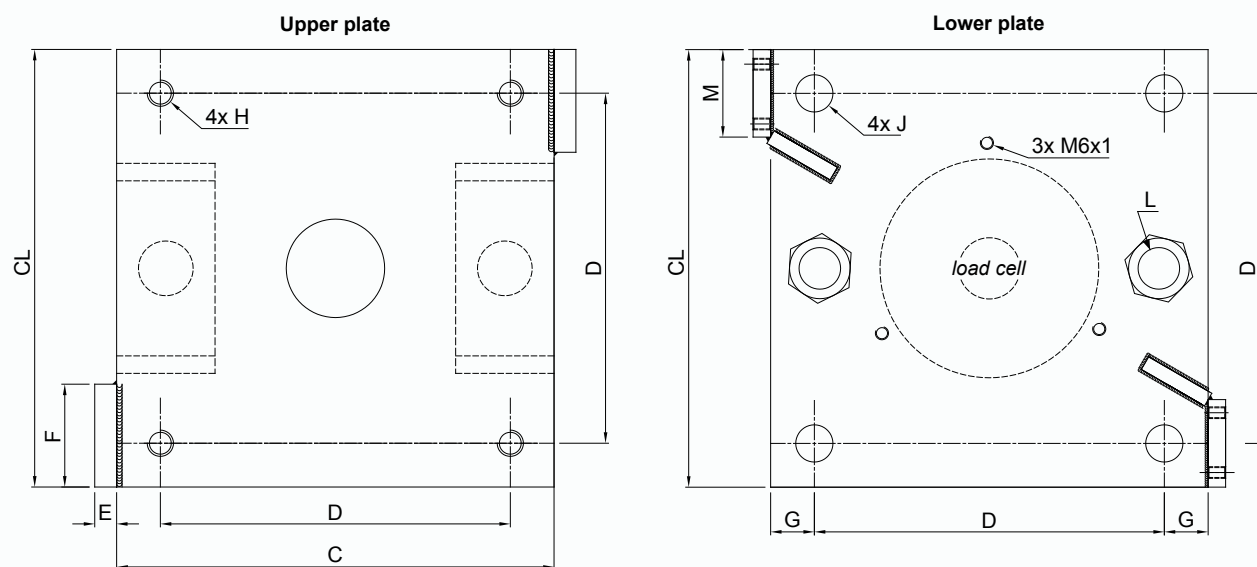
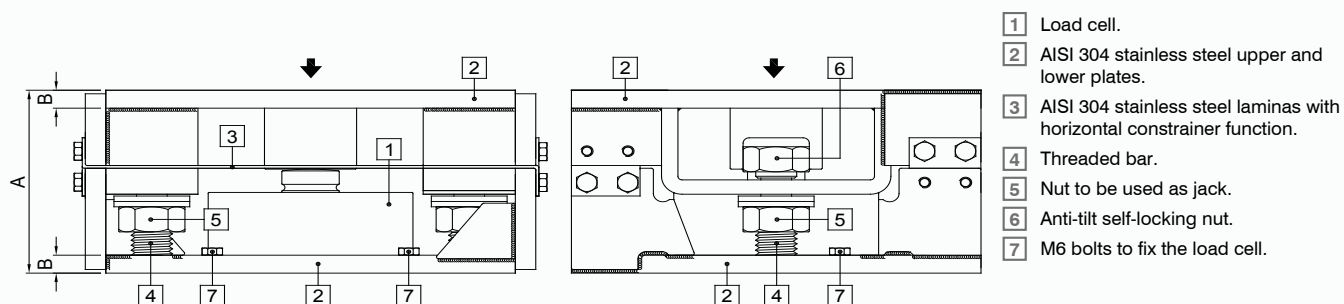


STRUCTURE
WITH 3-POINTS
SUPPORT



STRUCTURE
WITH 4-POINTS
SUPPORT

MOUNTING KIT for COMPRESSION-LOW PROFILE load cells

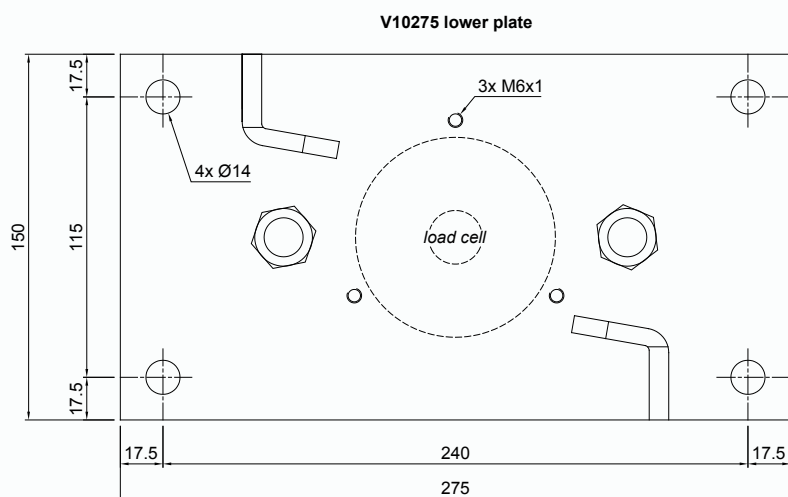


SV10000
 SV15000
 SV30000

	A	B	C	CL	D	E	F	G	H	J	L	M
SV10.000	95	10	175	150	115	0	0	30	M12x1.75	Ø14	M16x2.0	0
SV15.000	102	10	200	200	160	10	47	20	M12x1.75	Ø17	M20x2.5	50
SV30.000	132	12	250	250	185	12	70	32.5	M18x2.5	Ø20	M24x3	60

Dimensions (mm)

DIMENSIONS LOWER PLATE SV10275



The Company reserves the right to make changes to the technical data, drawings and images without notice.

JUNCTION BOXES

ELECTRICAL JUNCTION BOXES FOR LOAD CELLS

J-BOX4

LOAD CELLS CONNECTED

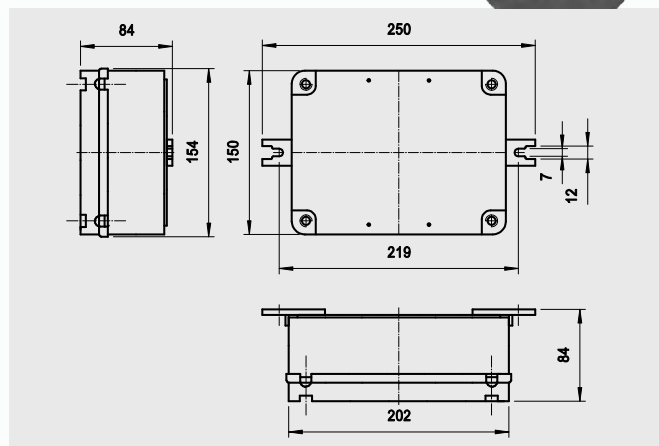
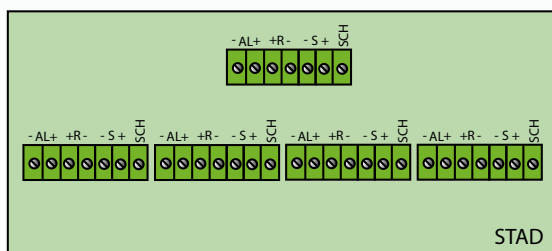
4

ENCODER CONNECTION

NO

IP PROTECTION

IP56



TECHNICAL FEATURES

Load cells connection	Up to 4 load cells (6 wire)
Encoder connection	NO
Dimension (mm)	200 x 154 x 80(h) - Fixing L=219mm
IP protection	IP56
Case material	Polycarbonate (grey color)
Top material	Polycarbonate (grey color)

MECHANICAL DRAWING (mm)

J-BOX8

LOAD CELLS CONNECTED

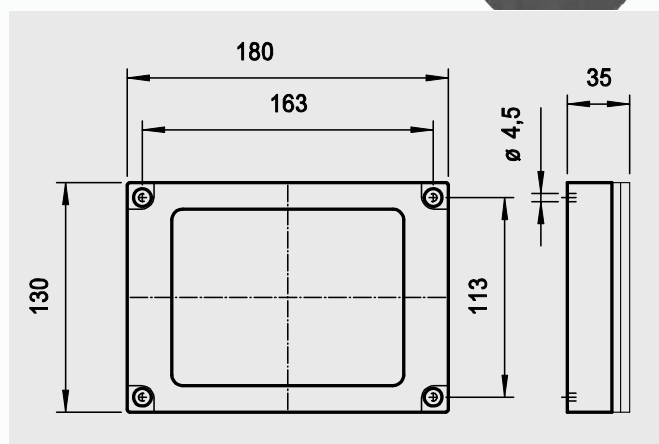
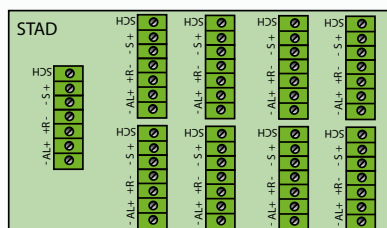
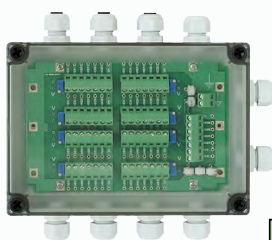
8

ENCODER CONNECTION

NO

IP PROTECTION

IP67



TECHNICAL FEATURES

Load cells connection	Up to 8 load cells (6 wire)
Encoder connection	NO
Dimension (mm)	180 x 130 x 35(h) - Fixing 163 x 113mm
IP protection	IP67
Case material	Polycarbonate (grey color)
Top material	Polycarbonate transparent

MECHANICAL DRAWING (mm)

JUNCTION BOXES

ELECTRICAL JUNCTION BOXES FOR LOAD CELLS

CE41INOX

LOAD CELLS CONNECTED

4

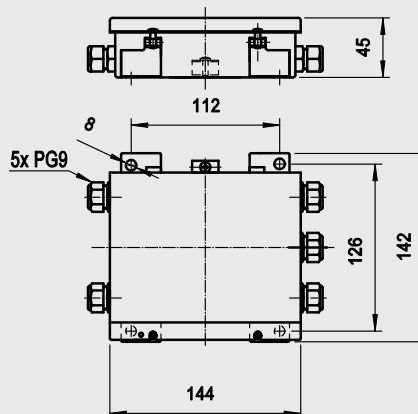
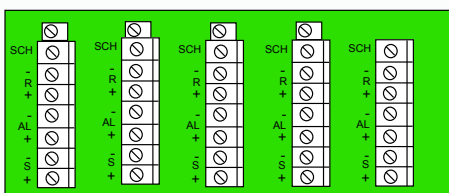
ENCODER CONNECTION

NO

INOX
Stainless Steel

IP PROTECTION

IP67



MECHANICAL DRAWING (mm)

TECHNICAL FEATURES

Load cells connection	Up to 4 load cells (6 wire)
Encoder connection	NO
Dimension (mm)	142 x 144 x 45(h) - Fixing 112 x 126mm
IP protection	IP67
Case material	Stainless steel AISI 304
Top material	Stainless steel AISI 304

CE41ATEX

LOAD CELLS CONNECTED

4

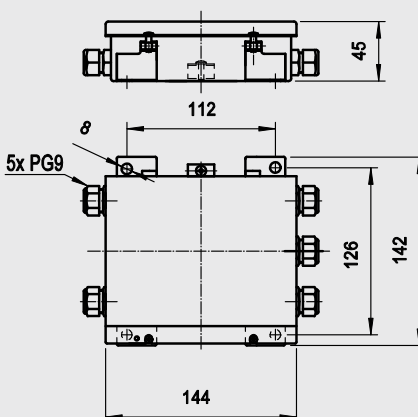
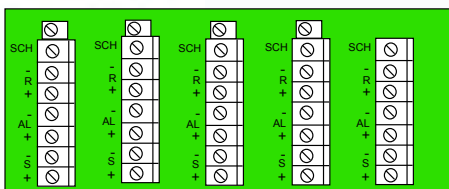
ENCODER CONNECTION

NO

ATEX

IP PROTECTION

IP67


 Certificato ATEX II 1GD
(zone 0-1-2-20-21-22)


MECHANICAL DRAWING (mm)

TECHNICAL FEATURES

Load cells connection	Up to 4 load cells (6 wire)
Encoder connection	NO
Dimension (mm)	142 x 144 x 45(h) - Fixing 112 x 126mm
IP protection	IP67
Case material	Stainless steel AISI 304
Top material	Stainless steel AISI 304

TLS

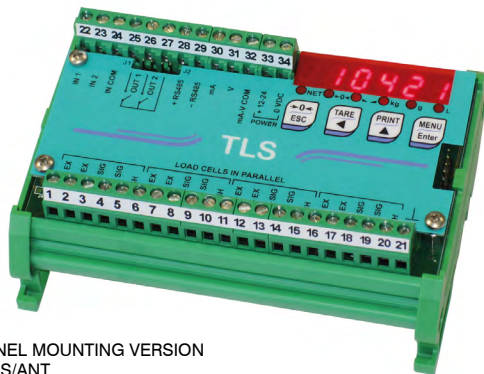
ON-SITE DIGITAL - ANALOG WEIGHT TRANSMITTER



RS485

ANALOG
OUTPUT

MODBUS RTU



BACK PANEL MOUNTING VERSION
TLS - TLS/ANT



IP67 VERSION BOX (on request)
TLS/IP67 + TAST - TLS/AN/IP67 + TAST

DESCRIPTION

- Digital/analog weight transmitter suitable for back panel mounting on Omega/DIN rail or junction box for field mounting (on request box versions).
- Dimensions: 123x92x50 mm.
- Six-digit red LED semialphanumeric display (8 mm height), 7 segment.
- Six indicator LED.
- Four-key keypad for the system calibration;
- **If mounted near the load cells, it replaces the parallel board.**

INPUT/OUTPUT AND FIELDBUSES

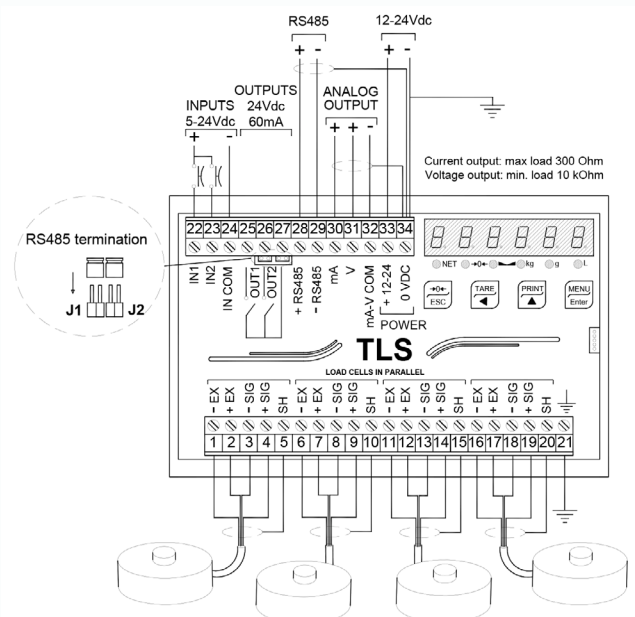
- Current or voltage 16 bit analog output
- RS485 serial port for communication via ModBus RTU protocol, ASCII bidirectional or continuous one way transmission.
- 2 optorelay digital outputs controlled by the setpoint values or via protocols.
- 2 optoisolated PNP digital inputs: status reading via serial communication protocols.
- 4 load cell dedicated inputs.
- The two inputs can work as net/gross weight, zero-setting, peak; the two outputs as set-points.
- Otherwise they can be remotely managed via protocol.
- In monodirectional mode the RS485 port can be directly connected to PC's or remote display's RS232 port.

AVAILABLE VERSIONS:

- TLS
- TLS/AN (with analogue output)
- TLS/IP67 + TAST (IP67 box)
- TLS/AN/IP67 + TAST (analogue output and IP67 box)

MAIN FUNCTIONS

- Connections to:
 - PLC via analog output.
 - PC/PLC via RS485 (up to 99 instruments with line repeaters, up to 32 without line repeaters).
 - remote display via RS485.
 - max. 8 load cells in parallel by junction box.
- Digital filter to reduce the effects of weight oscillation.
- Theoretical calibration (via keyboard) and real (with sample weights and the possibility of weight linearization up to 5 points).
- Tare weight zero setting.
- Automatic zero setting at power-on.
- Gross weight zero tracking.
- Semi-automatic tare (net/gross weight) and predetermined tare.
- Semi-automatic zero.
- Displaying the maximum weight value reached (peak).
- Direct connection between RS485 and RS232 without converter.
- Hysteresis and setpoint value setting.



ON-SITE DIGITAL - ANALOG WEIGHT TRANSMITTER


CERTIFICATIONS

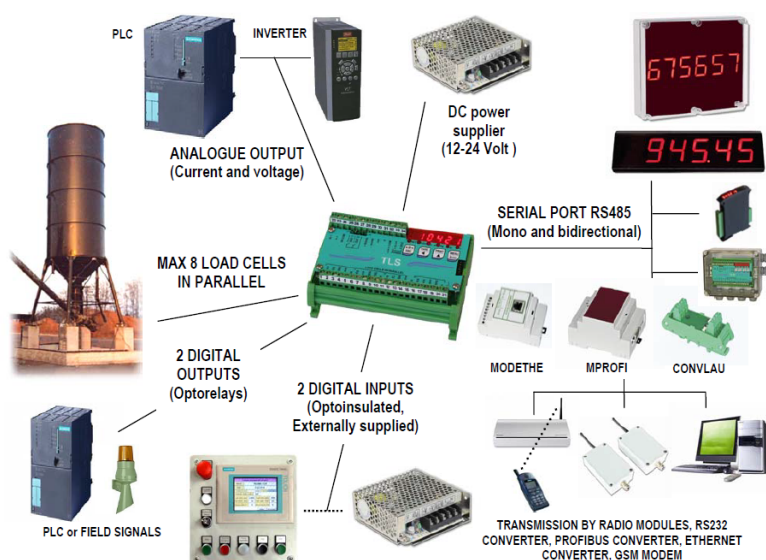
CERTIFICATIONS ON REQUEST

	IP67 ATEX II 3GD (zone 2-22) version with 6 PG9 cable glands (cod. CASTLTASTATEX)
	IECEx (zone 2-22)
	UL Recognized component - Complies with the United States and Canada regulations
	Complies with the Eurasian Custom Union regulations (Russia, Belarus, Kazakhstan)

TECHNICAL FEATURES

Power supply and consumption	12÷24 VDC ±10%; 5 W
Number of load cells • Load cells supply	up to 8 (350 Ω) - 4/6 wires • 5 VDC/120 mA
Linearity • Linearity of the analog output	<0.01% full scale • <0.01% full scale
Thermal drift • Thermal drift of the analog output	<0.0005% full scale/°C • <0.003% full scale/°C
A/D Converter	24 bit (16000000 points) - 80 Hz
Divisions (with measure range ±10 mV and sensitivity 2 mV/V)	±999999 • 0,01 μV/d
Measure range	±19.5 mV
Load cell's sensitivity	±3 mV/V
Conversion per second	80/s
Display range	±999999
Decimals • Display increments	0÷4 • x1 x2 x5 x10 x20 x50 x100
Digital filter • Conversion rate	0.080÷7.5 s • 5÷80 Hz
Relay logic outputs	n. 2 - 24 VDC/60 mA
Optoisolated logic inputs	n. 2 - 5÷24 VDC PNP
Serial ports	RS485
Baud rate	2400, 4800, 9600, 19200, 38400, 115200 (bit/s)
Optoisolated analog output	16 bit = 65535 divisions. Current: 0÷20 mA; 4÷20 mA (up to 300 Ω) Voltage: 0÷10 V; 0÷5 V; -10÷10 V; -5÷5 V (min. 10 kΩ)
Humidity (condensate free)	85%
Storage temperature	-30°C +80°C
Working temperature	-20°C +60°C

	Relay digital outputs	n. 1 - 30 VAC, 60VDC/150 mA
	Power supply device marked "LPS" (limited power source) or "Class 2"	



TLB

DIGITAL/ANALOG WEIGHT TRANSMITTER FOR BACK PANEL MOUNTING



MAIN FUNCTIONS

- Connections to:
 - PLC via analog output or fieldbuses;
 - PC/PLC via RS485 (up to 99 instruments with line repeaters, up to 32 without line repeaters);
 - remote display via RS485;
 - up to 8 load cells in parallel by junction box.
- Digital filter to reduce the effects of weight oscillation.
- Theoretical calibration (via keyboard) and real calibration (with sample weights and the possibility of weight linearization up to 5 points).
- Tare weight zero setting.
- Automatic zero setting at power-on.
- Gross weight zero tracking.
- Semi-automatic tare (net/gross weight) and preset tare.
- Displaying of the maximum weight value reached (peak).
- Direct connection between RS485 and RS232 without converter.

DESCRIPTION

- Weight transmitter suitable for back panel mounting on Omega/DIN rail.
- Dimensions: 25x115x120 mm.
- 6-digit red LED semi-alphanumeric display (8 mm height), 7-segment.
- 6 signalling LED.
- Four buttons for the system calibration.

INPUTS/OUTPUTS AND COMMUNICATION

- RS485 serial port for communication via ModBus RTU protocol, ASCII bidirectional or continuous one way transmission.
- 3 relay outputs controlled by the setpoint values or via protocols.
- 2 optoisolated PNP digital inputs: status reading via serial communication protocols.
- 1 load cell dedicated input.

FIELDBUSES

MODBUS RTU



MODBUS/TCP



ETHERNET
POWERLINK
certified product



TECHNICAL FEATURES

Power supply and consumption	12÷24 VDC ±10%; 5 W
Number of load cells • Load cells supply	up to 8 (350 Ω) - 4/6 wires • 5 VDC/120 mA
Linearity • Analog output linearity (only for TLB)	<0.01% full scale • <0.01% full scale
Thermal drift • Analog output thermal drift (only for TLB)	<0.0005% full scale/°C • <0.003% full scale/°C
A/D Converter	24 bit (16000000 points) - 4.8 kHz
Divisions (with measurement range ±10 mV and sensitivity 2 mV/V)	±999999 • 0.01 μV/d
Measurement range	±39 mV
Usable load cells sensitivity	±7 mV/V
Conversions per second	300/s
Display range	±999999
Decimals • Display increments	0÷4 • x1 x2 x5 x10 x20 x50 x100
Digital filter • Readings per second	10 levels • 5÷300 Hz
Relay outputs	3 - max 115 VAC/150 mA
Optoisolated digital inputs	2 - 5÷24 VDC PNP
Serial ports	RS485
Baud rate	2400, 4800, 9600, 19200, 38400, 115200 (bit/s)
Optoisolated analog output (only for TLB)	16 bit = 65535 divisions. 0÷20 mA; 4÷20 mA (up to 300 Ω) 0÷10 V; 0÷5 V; ±10 V; ±5 V (min 10 kΩ)
Humidity (condensate free)	85%
Storage temperature	-30°C +80°C
Working temperature	

DIGITAL/ANALOG WEIGHT TRANSMITTER FOR BACK PANEL MOUNTING

	DESCRIPTION	CODE
	RS485 serial port. Baud rate: 2400, 4800, 9600, 19200, 38400, 115200 (bit/s).	TLB485
	Optoisolated 16 bit analog output. Current: 0÷20 mA; 4÷20 mA (up to 300 Ω). Voltage: 0÷10 V; 0÷5 V; ±10 V; ±5 V (min 10 kΩ). Equipped with RS485 serial port.	TLB
	CANopen port. Baud rate: 10, 20, 25, 50, 100, 125, 250, 500, 800, 1000 (kbit/s). The instrument works as <i>slave</i> in a synchronous CANopen network. Equipped with RS485 serial port.	TLBCANOPEN
	DeviceNet port. Baud rate: 125, 250, 500 (kbit/s). The instrument works as <i>slave</i> in a DeviceNet network. Equipped with RS485 serial port.	TLBDEVICENET
	CC-Link port. Baud rate: 156, 625, 2500, 5000, 10000 (kbit/s). The instrument works as <i>Remote Device Station</i> in a CC-Link network and occupies 3 stations. Equipped with RS485 serial port.	TLBCCLINK
	PROFIBUS DP port. Baud rate: up to 12 Mbit/s. The instrument works as <i>slave</i> in a Profibus-DP network. Equipped with RS485 serial port.	TLBPROFI
	Modbus/TCP port. Type: RJ45 10Base-T or 100Base-TX (auto-sensing). The instrument works as <i>slave</i> in a Modbus/TCP network. Equipped with RS485 serial port.	TLBMODBUSTCP
	Ethernet TCP/IP port. Type: RJ45 10Base-T or 100Base-TX (auto-sensing). The instrument works in an Ethernet TCP/IP network and it is accessible via web browser. Equipped with RS485 serial port.	TLBETHETCP
	2x Ethernet/IP ports. Type: RJ45 10Base-T or 100Base-TX (auto-sensing). The instrument works as <i>adapter</i> in an Ethernet/IP network. Equipped with RS485 serial port.	TLBETHEIP
	2x PROFINET IO ports. Type: RJ45 100Base-TX. The instrument works as <i>device</i> in a Profinet IO network. Equipped with RS485 serial port.	TLBPROFINETIO
	2x EtherCAT ports. Type: RJ45 10Base-T or 100Base-TX (auto-sensing). The instrument works as <i>slave</i> in an EtherCAT network. Equipped with RS485 serial port.	TLBETHERCAT
	2x POWERLINK ports. Type: RJ45 10Base-T or 100Base-TX (auto-sensing). The instrument works as <i>slave</i> in a Powerlink network. Equipped with RS485 serial port.	TLBPOWERLINK
	2x SERCOS III ports. Type: RJ45 10Base-T or 100Base-TX (auto-sensing). The instrument works as <i>slave</i> in a Sercos III network. Equipped with RS485 serial port.	TLBSERCOS

W100

WEIGHT INDICATOR FOR LOCAL PANEL



MODBUS RTU



AVAILABLE VERSIONS:

- W100
- W100/AN

DESCRIPTION

- Weight indicator in DIN box suitable for front panel mounting (dimensions: 48x96x130 mm; drilling template: 45x92 mm).
- 6-digit red LED semi-alphanumeric display (14 mm height), 7-segment.
- 8 signalling LED.
- 4-key membrane keyboard.
- IP54 front panel protection rating (IP65 front optional).
- Real-time clock/calendar with buffer battery.
- Extractable screw terminal blocks.

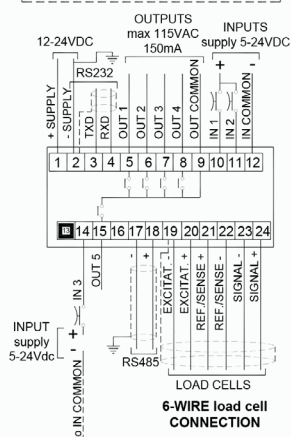
INPUTS/OUTPUTS AND COMMUNICATION

- RS485/RS232 serial ports for communication via ModBus RTU protocol, ASCII bidirectional or continuous one way transmission.
- 5 relay outputs controlled by the setpoint values or via protocols (4 outputs if analog output is present).
- 3 optoisolated PNP digital inputs: status reading via serial communication protocols (2 inputs if analog output is present).
- 1 load cell dedicated input.
- Current or voltage 16 bit optoisolated analog output (option on request).
- 12 groups selection by 5 setpoint via external selector switch or contact (option on request).

MAIN FUNCTIONS

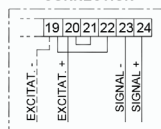
- Connections to:
 - PLC via analog output (on request);
 - PC/PLC via RS485/RS232 (up to 99 instruments with line repeaters, up to 32 without line repeaters);
 - remote display and printer via RS485/RS232;
 - up to 8 load cells in parallel by junction box;
 - intelligent junction box or other multichannel instruments: allow the use of advanced functions as digital equalization, load distribution analysis and automatic diagnostics.
- Digital filter to reduce the effects of weight oscillation.
- Theoretical calibration (via keyboard) and real calibration (with sample weights and the possibility of weight linearization up to 5 points).
- Tare weight zero setting.
- Automatic zero setting at power-on.
- Gross weight zero tracking.
- Semi-automatic tare (net/gross weight) and preset tare.
- Semi-automatic zero.
- Displaying of the maximum weight value reached (peak).
- Direct connection between RS485 and RS232 without converter.
- Hysteresis and setpoint value setting.
- Weight value printing with date and time via keyboard or external contact.
- The ANALOG OUTPUT option allows remote display with setpoint.

5 USCITE / 5 OUTPUTS
CINQUE SETPOINTS IMPOSTABILI O GESTIONE DELLE USCITE DA REMOTO VIA PROTOCOLLO.
THE OUTPUTS CAN WORK AS 5 SET POINTS OR CAN BE REMOTELY SWITCHED VIA PROTOCOL.

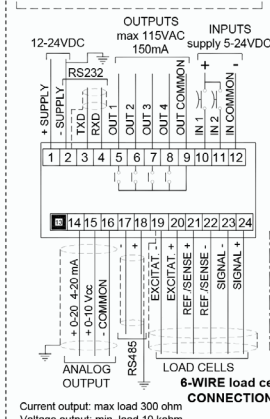


3 INGRESSI / 3 INPUTS
IMPOSTABILI CON FUNZIONE DI:
- NETTO/LORDO
- AZZERAMENTO
- PICCO
- STAMPA
oppure GESTIONE DA REMOTO.
THE INPUTS CAN BE REMOTELY SWITCHED VIA PROTOCOL OR WORK AS:
- NET/GROSS WEIGHT
- ZERO-SETTING
- PEAK
- PRINT

4-WIRE load cell CONNECTION

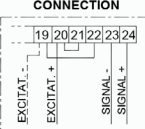


4 USCITE / 4 OUTPUTS
QUATTRO SETPOINTS IMPOSTABILI O GESTIONE DELLE USCITE DA REMOTO VIA PROTOCOLLO.
THE OUTPUTS CAN WORK AS 4 SET POINTS OR CAN BE REMOTELY SWITCHED VIA PROTOCOL.



2 INGRESSI / 2 INPUTS
IMPOSTABILI CON FUNZIONE DI:
- NETTO/LORDO
- AZZERAMENTO
- PICCO
- STAMPA
oppure GESTIONE DA REMOTO.
THE INPUTS CAN BE REMOTELY SWITCHED VIA PROTOCOL OR WORK AS:
- NET/GROSS WEIGHT
- ZERO-SETTING
- PEAK
- PRINT

4-WIRE load cell CONNECTION



Current output: max load 300 ohm
Voltage output: min. load 10 kohm

CERTIFICATIONS



OIML R76:2006, class III, 3x10000 divisions, 0.2 μ V/VS1 / OIML R61 - WELMEC Guide 8.8:2011 (MID)

CERTIFICATIONS ON REQUEST

M	Initial verification in combination with Laumas weighing module Support for metric label (dimensions: 124x77x1.5 mm)	
UL	UL Recognized component - Complies with the United States and Canada standards	<i>Richiedere offerta</i>
ERC	Complies with the Eurasian Custom Union standards (Russia, Belarus, Kazakhstan)	<i>Richiedere offerta</i>
NMI	NMI Trade Approved - Complies with the Australian standards for legal use with third parties	<i>Richiedere offerta</i>

OPTIONS ON REQUEST



Optoisolated 16 bit **analog output**.
→ One input and one output not available.

TECHNICAL FEATURES

Power supply and consumption	12÷24 VDC \pm 10%; 5 W
Number of load cells • Load cells supply	up to 8 (350 Ω) - 4/6 wires • 5 VDC/120 mA
Linearity • Analog output linearity	<0.01% full scale • <0.01% full scale
Thermal drift • Analog output thermal drift	<0.0005% full scale/°C • <0.003% full scale/°C
A/D Converter	24 bit (16000000 points) - 4.8 kHz
Divisions (with measurement range \pm 10 mV and sensitivity 2 mV/V)	\pm 999999 • 0,01 μ V/d
Measurement range	\pm 39 mV
Usable load cells sensitivity	\pm 7 mV/V
Conversions per second	300/s
Display range	\pm 999999
Decimals • Display increments	0÷4 • x1 x2 x5 x10 x20 x50 x100
Digital filter • Readings per second	10 levels • 5÷300 Hz
Relay outputs	5/4 - max 115 VAC/150 mA
Optoisolated digital inputs	3/2 - 5÷24 VDC PNP
Serial ports	RS485, RS232
Baud rate	2400, 4800, 9600, 19200, 38400, 115200 (bit/s)
Optoisolated analog output (option on request)	16 bit = 65535 divisions. 0÷20 mA; 4÷20 mA (up to 300 Ω) 0÷10 V; 0÷5 V; \pm 10 V; \pm 5 V (min 10 k Ω)
Humidity (condensate free)	85%
Storage temperature	-30 °C +80 °C
Working temperature	-20 °C +60 °C

UL	Relay outputs	5/4 - max 30 VAC, 60 VDC/150 mA
	Working temperature	-20 °C +50 °C
	Power supply device marked "LPS" (limited power source) or "Class 2"	

METROLOGICAL SPECIFICATIONS OF TYPE-APPROVED INSTRUMENTS

Applied standards	2014/31/UE - EN45501:2015 - OIML R76:2006
Operation modes	single interval, multi-interval, multiple range
Accuracy class	III or IIII
Maximum number of scale verification divisions	10000 (class IIII); 1000 (class IIII)
Minimum input signal for scale verification division	0.2 μ V/VS1
Working temperature	-10 °C +40 °C

W200

WEIGHT INDICATOR WITH FORMULA MANAGEMENT



AVAILABLE VERSIONS:

- W200 BASE
- W200 LOAD
- W200 UNLOAD
- W200 3 PRODUCTS
- W200 6 PRODUCTS
- W200 14 PRODUCTS

PROGRAM		M		EAC		CODE	
W200 BASE	R76 - R61	•	•	•	•	W200	
W200 LOAD	R76 - R61	•	•	•	•	W200-C	99form/1pr LOAD
W200 UNLOAD	R76 - R61	•	•	•	•	W200-S	99form/1pr UNLOAD
W200 3 PRODUCTS	R76 - R61	•	•	•	•	W200-3	99form/3pr LOAD
* W200 6 PRODUCTS	R76 - R61	•	•	•	•	W200-6	99form/6pr LOAD
* W200 14 PRODUCTS	R76 - R61	•	•	•	•	W200-14	99form/14pr LOAD

* External 8-relay modules included

ON REQUEST

CERTIFICATIONS

OIML R76:2006, class III, 3x10000 divisions, 0.2 μ V/VS1 / OIML R61 - WELMEC Guide 8.8:2011 (MID)

CERTIFICATIONS ON REQUEST

M	Initial verification in combination with Laumas weighing module
	UL Recognized component - Complies with the United States and Canada standards
EAC	Complies with the Eurasian Custom Union standards (Russia, Belarus, Kazakhstan)
	NMI Trade Approved - Complies with the Australian standards for legal use with third parties

FIELDBUSES

MODBUS RTU

WEIGHT INDICATOR WITH FORMULA MANAGEMENT

DESCRIPTION

- Weight indicator in DIN box suitable for front panel mounting (dimensions: 96x96x130 mm; drilling template: 92x92 mm).
- 6-digit red LED semi-alphanumeric display (14 mm height), 7-segment.
- 8 signalling LED.
- 5-key membrane keyboard.
- IP54 front panel protection rating (IP65 front optional).
- Real-time clock/calendar with buffer battery.
- Extractable screw terminal blocks.

MAIN FUNCTIONS

- Connections to:
 - PLC via analog output (on request);
 - PC/PLC via RS485/RS232 (up to 99 instruments with line repeaters, up to 32 without line repeaters);
 - remote display and printer via RS485/RS232;
 - up to 8 load cells in parallel by junction box;
 - intelligent junction box or other multichannel instruments: allow the use of advanced functions as digital equalization, load distribution analysis and automatic diagnostics.
- Digital filter to reduce the effects of weight oscillation.
- Theoretical calibration (via keyboard) and real calibration (with sample weights and the possibility of weight linearization up to 5 points).
- Tare weight zero setting.
- Automatic zero setting at power-on.
- Gross weight zero tracking.
- Semi-automatic tare (net/gross weight) and preset tare.
- Semi-automatic zero.
- Displaying of the maximum weight value reached (peak).
- Direct connection between RS485 and RS232 without converter.
- Weight value printing with date and time via keyboard or external contact.

INPUTS/OUTPUTS AND COMMUNICATION

- RS485/RS232 serial ports for communication via ModBus RTU protocol, ASCII bidirectional or continuous one way transmission.
- 5 relay outputs controlled by the setpoint values or via protocols (4 outputs if analog output is present).
- 3 optoisolated PNP digital inputs: status reading via serial communication protocols (2 inputs if analog output is present).
- 1 load cell dedicated input.
- Current or voltage 16 bit optoisolated analog output (option on request).

BASE PROGRAM

- Hysteresis and setpoint value setting.
- The indicator can be used as a remote display with setpoints.
- 12 groups selection by 5 setpoint via external selector switch or contact (option on request).

BATCHING PROGRAM

- 99 settable formulas.
- Batching resume after a blackout.
- Automatic fall calculation.
- Tolerance error control.
- Precision batching through slow function.
- Precision batching through tapping function.
- Consumption storage.
- Printing of batching data.
- Alarm contact management.
- Selection of the first 12 formulas via external selector switch or contact (option on request).
- Batching start via external contact or keyboard.

TECHNICAL FEATURES

Power supply and consumption	12÷24 VDC ±10%; 5 W (on request: 115÷230 VAC; 50÷60 Hz; 6 VA)
Number of load cells • Load cells supply	up to 8 (350 Ω) - 4/6 wires • 5 VDC/240 mA
Linearity • Analog output linearity	<0.01% full scale • <0.01% full scale
Thermal drift • Analog output thermal drift	<0.0005% full scale/°C • <0.003% full scale/°C
A/D Converter	24 bit (16000000 points) - 4.8 kHz
Divisions (with measurement range ±10 mV and sensitivity 2 mV/V)	±999999 • 0.01 μV/d
Measurement range	±39 mV
Usable load cells sensitivity	±7 mV/V
Conversions per second	300/s
Display range	±999999
Decimals • Display increments	0÷4 • x1 x2 x5 x10 x20 x50 x100
Digital filter • Readings per second	10 levels • 5÷300 Hz
Relay outputs	5/4 - max 115 VAC/150 mA
Optoisolated digital inputs	3/2 - 5÷24 VDC PNP
Serial ports	RS485, RS232
Baud rate	2400, 4800, 9600, 19200, 38400, 115200 (bit/s)
Optoisolated analog output (option on request)	16 bit = 65535 divisions. 0÷20 mA; 4÷20 mA (up to 300 Ω) 0÷10 V; 0÷5 V; ±10 V; ±5 V (min 10 kΩ)
Humidity (condensate free)	85%
Storage temperature	-30 °C +80 °C
Working temperature	-20 °C +60 °C

PYTHON 365

WEIGHING UNIT WITH GUIDED LOAD MANAGEMENT

ASCII Modbus

PROFI BUS

PROFI NET

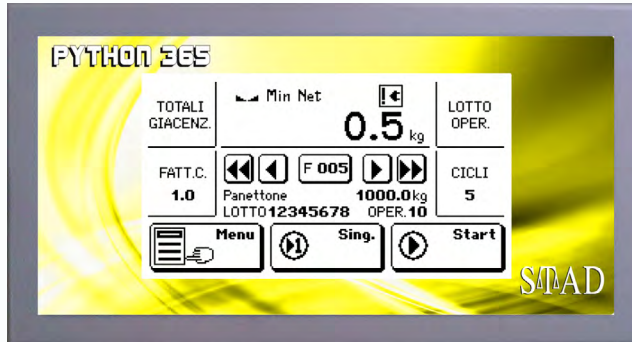


(DEFAULT PROTOCOL OR OPTIONAL)



AVAILABLE VERSIONS:

- PYTHON 365
- PYTHON365-9PR (*)
- PYTHON365-17PR (*)



(*) : COMPLETE WITH EXTERNAL RELE MODULE



SELECTABLE LANGUAGES

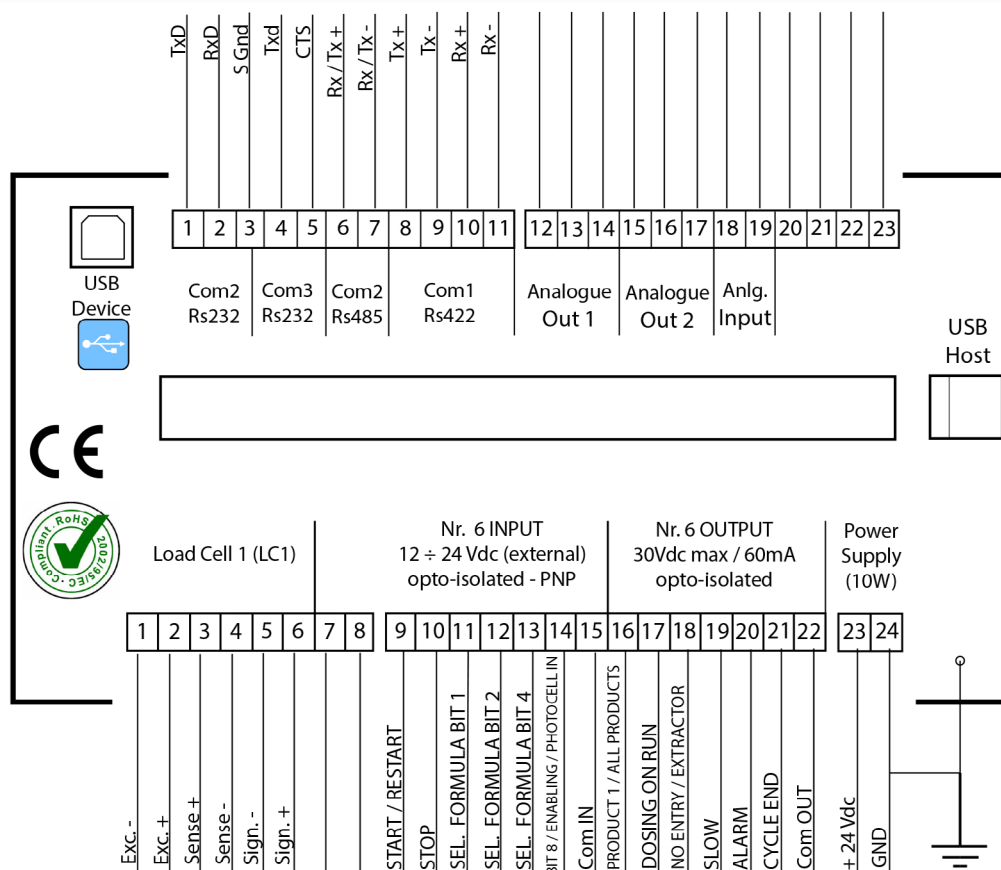


Instrument box for panel mounting.

Backlighted 5.2" TOUCH SCREEN LCD display.

IP 65 front panel protection rating.

Python 365 is designed to handle multi-product dosing, by providing visual clues to the operator handling the loading or by interfacing with external PC/PLC systems.



PYTHON 365

WEIGHING UNIT WITH GUIDED LOAD MANAGEMENT



OPTIONAL AVAILABLE:

- PROFIBUS-DP PROTOCOL;
- PROFINET-IO PROTOCOL;
- USB HOST FOR PEN DRIVE;
- ETHERNET INTERFACE;
- 4IN/8OUT ADDITIONAL MODULE;
- 24 COLUMN PRINTER;
- BIG DISPLAY REPEATER.

MAIN FEATURES OF PYTHON 365

- Memorization of 100 different formulas x 20 steps.
- Capable to programm, in the order that the operator desires, steps for loading product, partial or total unloading, output relay opening/closing, waiting from external input, waiting by time.
- Start via keyboard by setting formula and desired cycles (max 9999).
- Start via external contact, cycles before memorized via keyboard, otherwise start of the first 9 formulas selected by four BCD inputs for a only cycle at a time.
- Selection product's name, fall, slow, tolerance for each product.
- "Out of product" alarm during the batching.
- Minimum stocks check for each product.
- Calculation of consumption and stocks for each product.
- Calculation of production for each formula with cycle's number executed.
- Possibility to batch a only product automatically via keyboard.
- Possibility to execute an automatic unloading, by keyboard, of a quantity prememorized.
- Possibility to execute an assisted manual batching.
- Automatic printout at the cycle end and manual printout of: constants, formulas, consumption, stocks, formula's production.
- Pause of the batching by the keyboard.
- In the event of a power failure during batching, the microprocessor resumes batching from the point of interruption.

TECHNICAL FEATURES

Power supply and consumption	24Vdc 10W		
CPU - Micro controller	RISC 32 bit - 44MHz		
Number of load cells in parallel and supply	max 8 (350 Ω) - 5Vdc / 120mA		
Communication protocol	RS232 / RS485 / USB Device, Ethernet		
A/D converter	24bit		
Protection rating	IP65		
Display resolution	10.000	Analog output	16bit (V e mA)
Internal resolution	up to 600.000	Analog input	24bit (V e mA)
Reading resolution	1x, 2x, 5x, 10x	Working temperature	-10 ÷ +50°C
Logic output	nr.6 photorelè	Storage temperature	-20 ÷ +60°C
Logic output features (cad.)	max 30Vdc - 60mA	Humidity	85% (s.c.)
Logic input	nr.6 optoisolated	Case dimension	196x105x10mm
Logic input features (cad.)	12/24Vdc PNP	Panel hole for monting	187x97mm

RIP2X8VGR

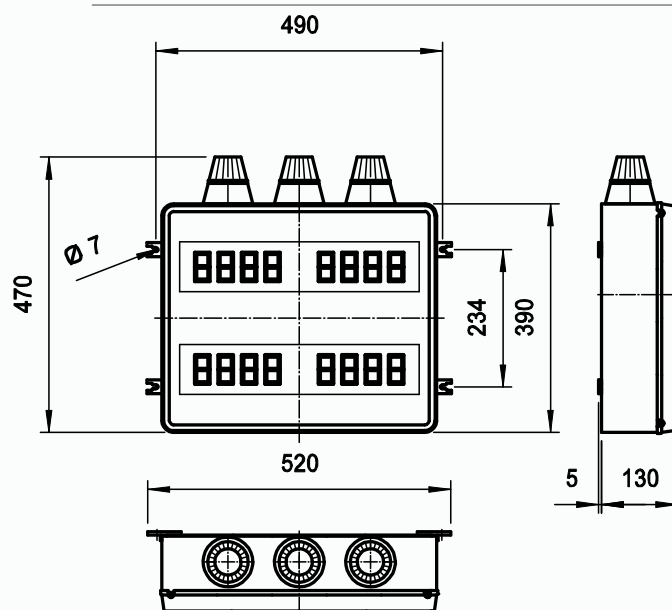
LARGE DIGIT REMOTE DISPLAY WITH LIGHTS INDICATOR VGR



DESCRIPTION

- Digital remote large digit display for connection to PYTHON 365 instruments and serial weight reading up to 20 m away in any light condition.
- Guided manual batching: the first 8-digit line displays the formula number and the gross weight; the second 8-digit line displays the product number and the amount to be batched that decreases to zero while the product is being loaded.
- 7 segment red LED display; alphanumeric, 2 lines 8-digit (h 57 mm).
- RS232/RS422 serial connexion.
- IP56 waterproof plastic box.
- Lights indicator VGR.
- Wall mounting (fixing brackets included in the supply).
- Parameters setting: decimal number, net or gross weight display, baud rate and time-out by dip-switch and values selector button.
- Screw terminals block.

DIEMENSIONS



TECHNICAL FEATURES

Power supply and consumption	12÷24 VDC; 30W
Serial port	RS232c/RS422
Serial cable length	15 m (RS232c); 1000m (RS422)
Baud rate	1200, 2400, 4800, 9600, 19200, 38400, 57600 (bit/s)
Serial protocols	ASCII
Complying to standards	EN61000-6-2:2005 - EN61000-6-3:2007+A1:2007 - EN61010-1:2010
Humidity (condensate free)	85%
Storage temperature	-20°C +50°C
Working temperature	-10°C +40°C

RIP2X10VGR

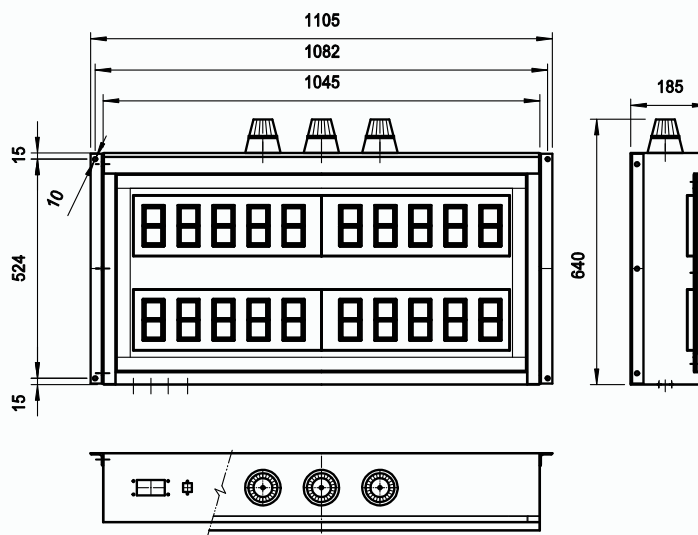
LARGE DIGIT REMOTE DISPLAY WITH LIGHTS INDICATOR VGR



DESCRIPTION

- Digital remote large digit display for connection to PYTHON 365 instruments and serial weight reading up to 20 m away in any light condition.
- Guided manual batching: the first 8-digit line displays the formula number and the gross weight; the second 8-digit line displays the product number and the amount to be batched that decreases to zero while the product is being loaded.
- Red LED display; alphanumeric, 2 lines 10-digit (h 100 mm).
- RS232/RS422 serial connexion.
- IP65 waterproof stainless steel box.
- Lights indicator VGR.
- Wall mounting (fixing brackets included in the supply).
- Parameters setting: decimal number, net or gross weight display, baud rate and time-out by dip-switch and values selector button.
- Screw terminals block.

DIEMENSIONS

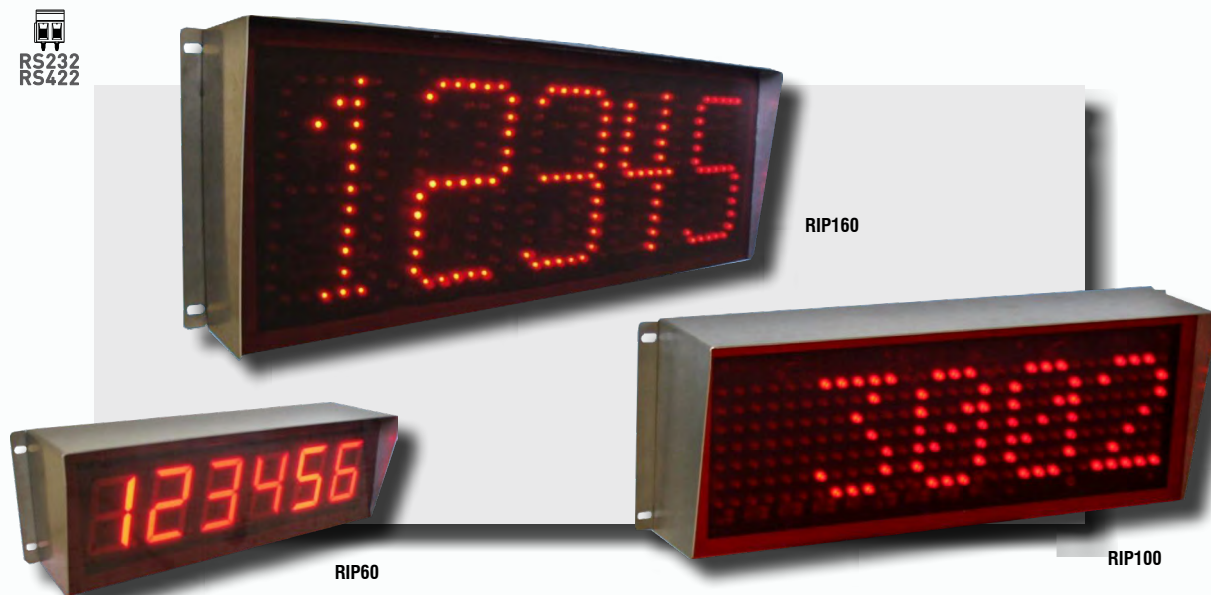


TECHNICAL FEATURES

Power supply and consumption	110 ÷ 230 VAC; 80W
Serial port	RS232c/RS422
Serial cable length	15 m (RS232c); 1000m (RS422)
Baud rate	1200, 2400, 4800, 9600, 19200, 38400, 57600 (bit/s)
Serial protocols	ASCII
Complying to standards	EN61000-6-2:2005 - EN61000-6-3:2007+A1:2007 - EN61010-1:2010
Humidity (condensate free)	85%
Storage temperature	-20°C +50°C
Working temperature	-10°C +40°C

RIP60-100-160

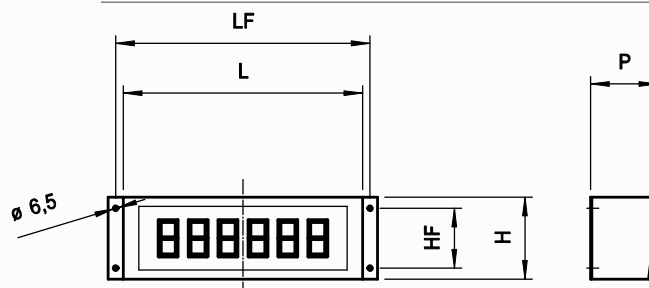
LARGE DIGIT REMOTE DISPLAY



DESCRIPTION

- Digital remote large digit display for connection to COBRA / TAIPAN 365 instruments and serial weight reading up to 20 m away in any light condition.
- Display of current flow rate or totalizer.
- Red LED display; alphanumeric, 1 line.
- RS232/RS422 serial connection.
- IP65 waterproof stainless steel box.
- Wall mounting.
- Screw terminals block.

DIEMENSIONS



MODELLO	DIGIT HEIGHT	DIGIT NR.
RIP60	60mm	6
RIP100	100mm	5
RIP160	160mm	5

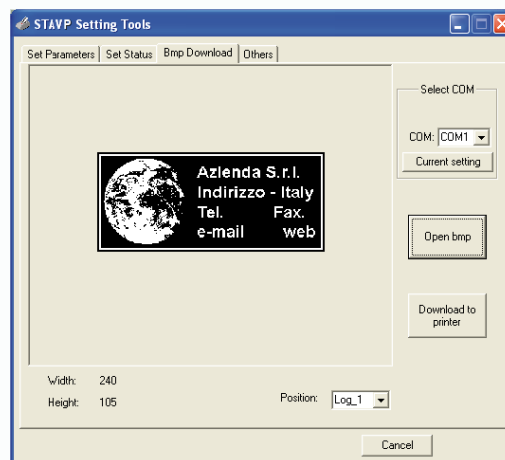
Model	L	H	P	LF	HF
RIP60	320	110	90	340	80
RIP100	500	185	115	510	155
RIP160	656	230	110	635	195

TECHNICAL FEATURES

Power supply and consumption	110÷240 VAC; 15W (RIP60) / 25W (RIP100 - RIP160)
Serial port	RS232c/RS422
Serial cable length	15 m (RS232c); 1000m (RS485)
Baud rate	1200, 2400, 4800, 9600, 19200, 38400, 57600, 115200 (bit/s)
Serial protocols	ASCII
Complying to standards	EN61000-6-2:2005 - EN61000-6-3:2007 + A1:2007 - EN61010-1:2010
Humidity (condensate free)	85%
Storage temperature	-20°C +50°C
Working temperature	-10°C +40°C

STAVP-RS232

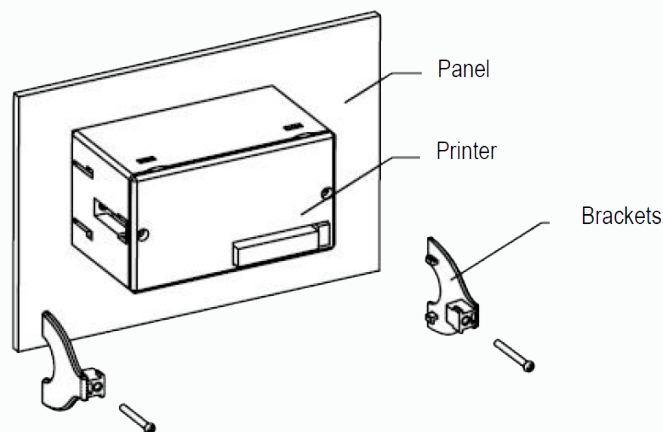
PRINTER FOR COBRA / TAIPAN / PYTHON / MAMBA ELECTRONIC UNITS



DESCRIPTION

- STAVPRS232 (RS232 serial) - STAVPTTL (TTL serial):
- 32-column thermal printer with RS232/TTL interface .
- Universal fixing system suitable for installation on panels of various thickness.
- Power supply: 5 Vdc, 3 A.
- Paper end sensor.
- Paper roll width: 57.5 ± 0.5 mm (\varnothing 40 mm max).
- Resolution: 384 dot/line, 8 dot/mm.
- Printing speed 15mm/s.
- Working temperature: 0-50 °C.
- Humidity: 20% -80%. Storage temperature: -20°C +60°C.
- Dimensions: 111x64x68 mm. Drilling template: 103x57 mm.
- Weight: 185 g.
- Included in the supply: external power supply 115/230 VAC (5 VDC, 5 A output); printing cable (DB9 male connector); TTL printing cable; programming cable (DB9 female connector); "STAVP Setting Tools" software CD-ROM.
- The STAVP allows to save a bitmap image (for example company logo and data) in its memory; the image can then be used as heading when the printer is connected to instruments that issue "receipts".

FIXING



TECHNICAL FEATURES

Power supply and consumption	5 VDC; 3A (external supplier 115÷230VAC)
Serial port	RS232c
Serial cable length	15 m (RS232c)
Baud rate	9600 (bit/s)
Serial protocols	ASCII
Paper roll dimensions	$57,5 \pm 0,5$ mm (\varnothing 40 mm max)
Humidity (condensate free)	20÷80%
Drilling template	103x57mm
Working temperature	0°C +50°C

The Company reserves the right to make changes to the technical data, drawings and images without notice.

SINGLE CELL PLATFORMS WITH STAINLESS STEEL TOP




Capacity up to 600 kg



DESCRIPTION

- Painted steel tubular structure
- AISI 304 stainless steel loading top (laid)
- IP65 aluminium alloy load cell
- Galvanized steel and polyamid feet
- Connection for indicator stand

CAPACITY	kg	ACCURACY CLASS			DIMENSION (mm)	WEIGHT (kg)	CODE
		C3	C4				
max. 6		•	•	•	300 x 300	6	ACN6
max. 15		•	•	•	300 x 300	6	ACN15
max. 30		•	•	•	300 x 300	6	ACN30
max. 50		•	•	•	300 x 300	6	ACN50
max. 60		•	—	•	400 x 400	8.5	ACN60
max. 120		•	—	•	400 x 400	8.5	ACN120
max. 150		•	•	•	600 x 600	24	ACN150
max. 300		•	•	•	600 x 600	24	ACN300
max. 600		•	—	•	800 x 800	48.5	ACN600

ON REQUEST

CERTIFICATIONS



OIML R60 C3

CERTIFICATIONS ON REQUEST



ATEX II 1GD (zone 0-1-2-20-21-22)



IECEx (zone 0-1-2-20-21-22)

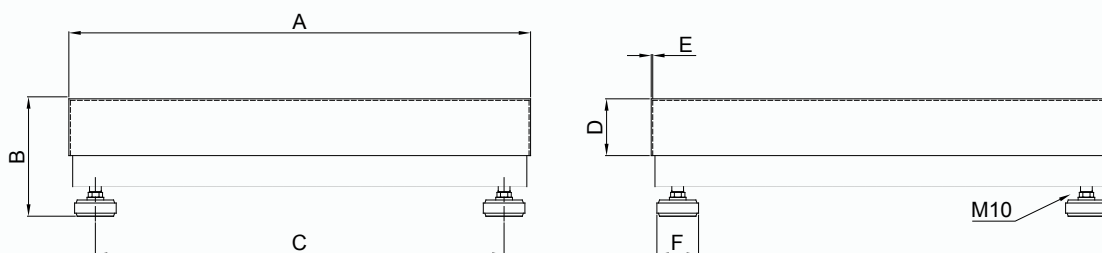


OIML R60 C4

ACN + WDESKB-L

SINGLE CELL PLATFORMS WITH STAINLESS STEEL TOP

DIMENSIONS (mm)



Code	Load cells capacities	Platforms	A	B	C	D	E	F	Gross Weight
ACN6 / 15 / 30 / 50	10 / 20 / 50 / 100 kg	300 x 300 mm	300	125	237	56	1	56	6 kg
ACN60 / 120	100 / 200 kg	400 x 400 mm	400	130	337	52	1	56	8.5 kg
ACN150 / 300	200 / 500 kg	600 x 600 mm	600	150	537	77	1.5	56	24 kg
ACN600	1000 kg	800 x 800 mm	800	170	715	90	1.5	56	48.5 kg

ELECTRICAL CONNECTIONS

	ACN 6-120	ACN 150-300	ACN 600
SHIELD			
+ SIGNAL	GREEN	GREEN	BLUE
+ EXCITATION	RED	RED	RED
+ REF./SENSE	BLUE	BLUE	BROWN
- SIGNAL	WHITE	WHITE	WHITE
- EXCITATION	BLACK	BLACK	YELLOW
- REF./SENSE	BROWN	YELLOW	BLACK

■ where provided



OPTIONS ON REQUEST

	DESCRIPTION	CODE
	Indicator stainless steel support column (Ø 38 mm, h 700 mm) Painted steel bracket for platform mounting.	COLONNAM + STAFFACN
	Indicator stainless steel support column (Ø 38 mm, h 700 mm) Stainless steel bracket for platform mounting.	COLONNAM + STAFFAIN

AISI 304 STAINLESS STEEL SINGLE CELL PLATFORMS





Capacity up to 300 kg



DESCRIPTION

- AISI 304 stainless steel tubular structure
- AISI 304 stainless steel loading top (laid)
- IP68 stainless steel load cell (IP69K on request)
- Stainless steel and polyamid feet
- Connection for indicator stand

CAPACITY	kg	ACCURACY CLASS C3	 	DIMENSION (mm)	NET WEIGHT (kg)	CODE
max. 15		•	•	400 x 400	11.5	AILN15
max. 30		•	•	400 x 400	11.5	AILN30
max. 60		•	•	400 x 400	13.3	AILN60
max. 150		•	•	400 x 400	13.3	AILN150
max. 200		•	•	600 x 600	24.5	AILN200
max. 300		•	•	600 x 600	24.5	AILN300


ON REQUEST

CERTIFICATIONS



OIML R60 C3

CERTIFICATIONS ON REQUEST



Declaration of conformity + IP69K marking protection rating

Water protection when cleaning high pressure / steam jet (Test: pressurized hot water is sprayed from a distance of 150 mm).
Water pressure 100 bar; temperature 80 ° C; test duration 250 seconds (Reference standard DIN 40050-9).



ATEX II 1GD (zone 0-1-2-20-21-22)

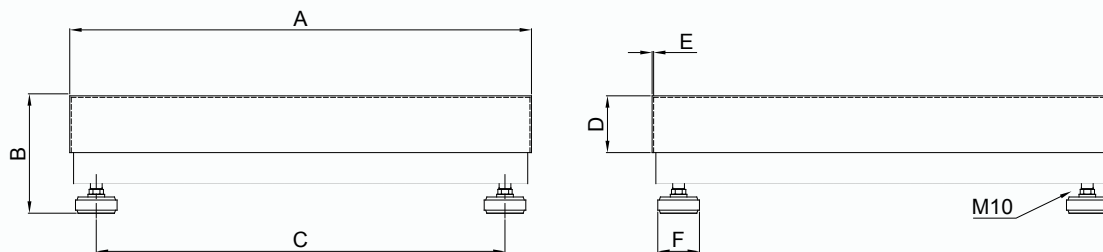


IECEx (zone 0-1-2-20-21-22)

AILN + WINOX-L

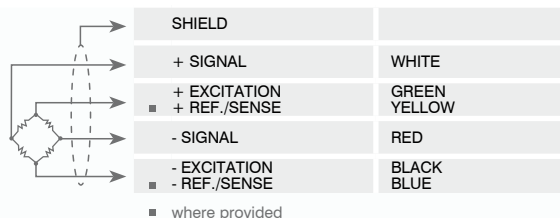
AINI 304 STAINLESS STEEL SINGLE CELL PLATFORMS

DIMENSIONS (mm)



Code	Load cells capacities	Platforms	A	B	C	D	E	F	Gross Weight
AILN15 / 30	20 / 50 kg	400 x 400 mm	400	130	337	52	1	56	11.5 kg
AILN60 / 150	100 / 200 kg	400 x 400 mm	400	150	337	52	1	56	13.3 kg
AILN200 / 300	300 / 500 kg	600 x 600 mm	600	150	537	77	1.5	56	24.5 kg

ELECTRICAL CONNECTIONS



OPTIONS ON REQUEST



DESCRIPTION

Indicator stainless steel support column (Ø 38 mm, h 700 mm)
Stainless steel bracket for platform mounting.

CODE

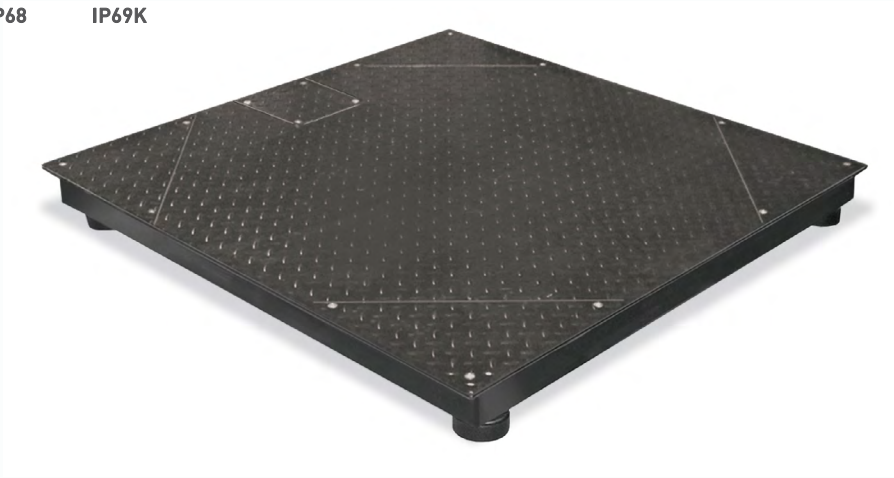
COLONNAM
+ STAFFAIN

P1250 - P1200x1500 - P1500

PAINTED STEEL PLATFORMS WITH FOUR IP68 LOAD CELLS




Capacity up to 3000 kg



DESCRIPTION





- Painted steel platform with inspectable loading top on cells and junction box sides.
- 4 IP68 AISI 420 stainless steel shear beam load cell. 1000 kg capacity. OIML R60 C3 accuracy class (IP69K protection on request)
- IP67 stainless steel junction box with equalization board and 6-output wires cable (5 m lenght).
- Galvanized steel self-centering adjustable jointed feet.
- Two M12 holes for lifting.
- **On request:** CUSTOM platforms with non-standard dimensions up to 2500x2500 mm and capacities up to 6000 kg.



CAPACITY	kg	ACCURACY CLASS		DIMENSION (mm)	WEIGHT (kg)	CODE
		C3	 			
max. 3000		•	•	1250 x 1250	110	P1250
max. 3000		•	•	1200 x 1500	112	P1200x1500
max. 3000		•	•	1500 x 1500	148	P1500


ON REQUEST

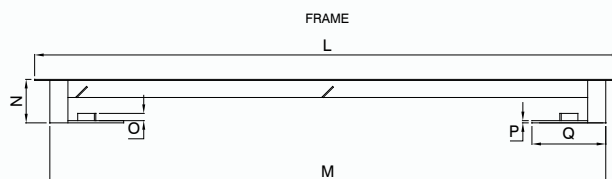
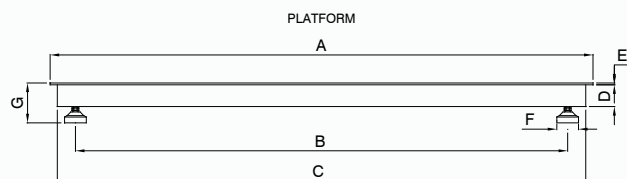
CERTIFICATIONS

	OIML R60 C3
CERTIFICATIONS ON REQUEST	
	Declaration of conformity + IP69K marking protection rating <i>Water protection when cleaning high pressure / steam jet (Test: pressurized hot water is sprayed from a distance of 150 mm). Water pressure 100 bar; temperature 80 ° C; test duration 250 seconds (Reference standard DIN 40050-9).</i>
	ATEX II 1GD (zone 0-1-2-20-21-22)
	IECEx (zone 0-1-2-20-21-22)

P1250 - P1200x1500 - P1500

PAINTED STEEL PLATFORMS WITH FOUR IP68 LOAD CELLS

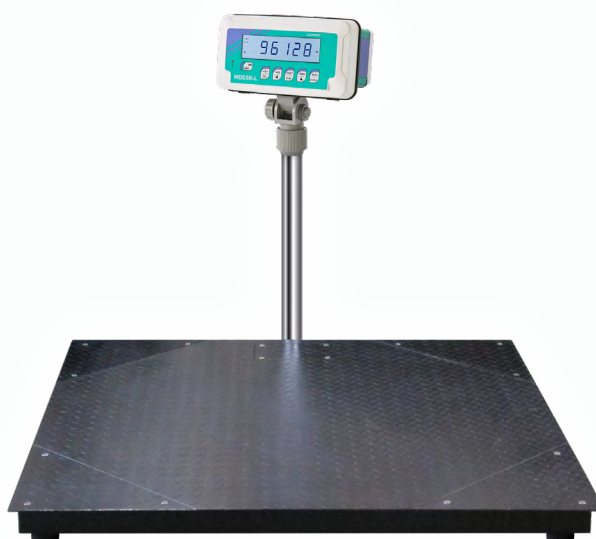
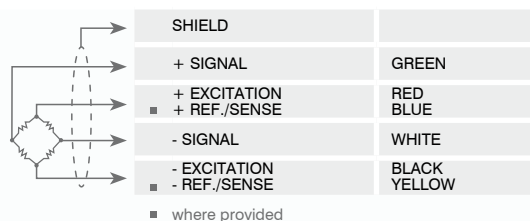
DIMENSIONS (mm)



Code	Load Cells capacities	Platforms A	B	C	D	E	F	G	Gross Weight
P1250	1000 kg	1250 x 1250	1115	1210	60	5	60	90	110 kg
P1200P1500	1000 kg	1200 x 1500	1065 x 1370	1160 x 1460	60	5	60	÷	112 kg
P1500	1000 kg	1500 x 1500	1370	1460	60	5	60	105	148 kg

Code	L	M	N	O	P	Q	Gross Weight
TELP1250	1370 x 1370	1270 x 1270	105	20	8	204	30 kg
TELP1200P1500	1620 x 1320	1520 x 1220	105	20	8	204	33 kg
TELP1500	1620 x 1620	1536 x 1536	117	20	8	204	36 kg

ELECTRICAL CONNECTIONS



OPTIONS ON REQUEST

	DESCRIPTION	CODE
	Galvanized steel pit frame with center adjusting brackets. For platforms: 1250x1250 mm 1200x1500 mm 1500x1500 mm	TELP1250 TELP1200P1500 TELP1500
	Painted steel access ramp. Dimensions: 1250x1060xh110mm 1500x1060xh110mm	P1250RAMP P1500RAMP
	Indicator stainless steel support column (Ø 38 mm, h 700 mm) Steel bracket complete with wheels..	MOBILCOLONNA
	AISI 304 stainless steel plates for constraint against lateral forces and anti-tilt. For self-centring joint foot.	PPV

P1250 INOX - 1500 INOX

AISI 304 STAINLESS STEEL PLATFORMS WITH 4 IP68 LOAD CELLS

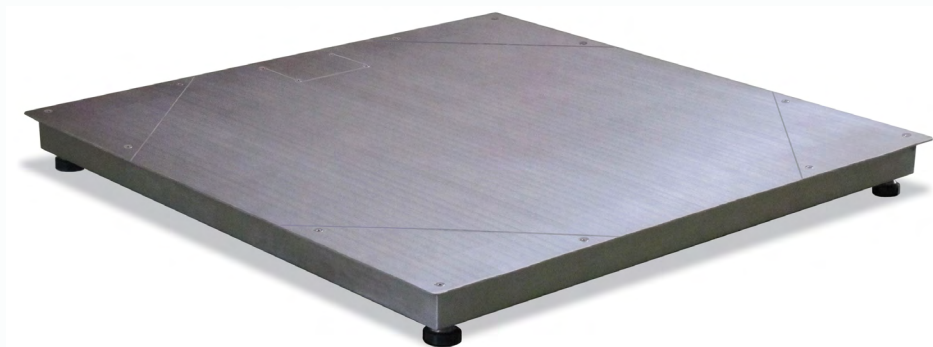


IP68



IP69K

Capacity up to 3000 kg



DESCRIPTION

- AISI 304 stainless steel platform with inspectable loading top on cells and junction box sides.
- 4 IP68 17-4 PH stainless steel shear beam load cell. 1000 kg capacity. OIML R60 C3 accuracy class (IP69K protection on request)
- IP67 stainless steel junction box with equalization board and 6-output wires cable (5 m length).
- AISI 304 stainless steel self-centering adjustable jointed feet.
- Two M12 holes for lifting.
- **On request:** CUSTOM platforms with non-standard dimensions up to 2500x2500 mm and capacities up to 6000 kg.



CAPACITY	kg	ACCURACY CLASS C3		DIMENSION (mm)	WEIGHT (kg)	CODE
max. 3000		•	•	1250 x 1250	90	P1250INOX
max. 3000		•	•	1500 x 1500	130	P1500INOX

ON REQUEST

CERTIFICATIONS



OIML R60 C3

CERTIFICATIONS ON REQUEST



Declaration of conformity + IP69K marking protection rating

Water protection when cleaning high pressure / steam jet (Test: pressurized hot water is sprayed from a distance of 150 mm).
Water pressure 100 bar; temperature 80 ° C; test duration 250 seconds (Reference standard DIN 40050-9).



ATEX II 1GD (zone 0-1-2-20-21-22)

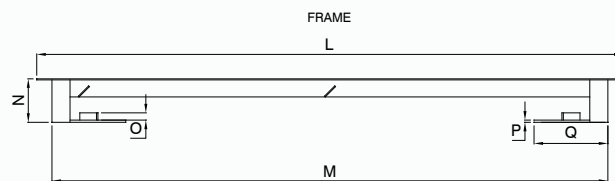
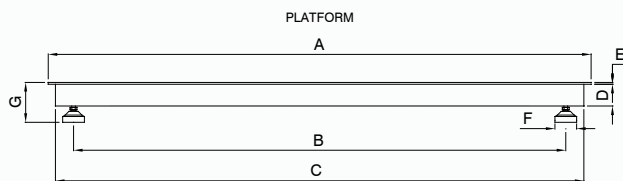


IECEx (zone 0-1-2-20-21-22)

P1250 INOX - 1500 INOX

AISI 304 STAINLESS STEEL PLATFORMS WITH 4 IP68 LOAD CELLS

DIMENSIONS (mm)



Code	Load Cells capacities	Platforms A	B	C	D	E	F	G	Gross Weight
P1250INOXN	1000 kg	1250 x 1250	1115	1210	60	4.5	60	105	90 kg
P1500INOXN	1000 kg	1500 x 1500	1370	1460	70	4.5	60	115	130 kg

Code	L	M	N	O	P	Q	Gross Weight
TELP1250INOX	1370 x 1370	1270 x 1270	115	20	8	204	30 kg
TELP1500INOX	1620 x 1620	1536 x 1536	120	20	6	204	36 kg

ELECTRICAL CONNECTIONS



OPTIONS ON REQUEST

	DESCRIPTION	CODE
	AISI 304 stainless steel pit frame with center adjusting brackets. For platforms: 1250x1250 mm 1500x1500 mm	TELP1250INOX TELP1500INOX
	Stainless steel access ramp. Dimensions: 1250x1060xh110mm	P1250INOXRAMPE
	Indicator stainless steel support column (Ø 38 mm, h 700 mm) Steel bracket complete with wheels.	MOBILCOLONNA
	AISI 304 stainless steel plates for constraint against lateral forces and anti-tilt. For self-centring joint foot.	PPV

WDESKB L - WINOX L

WEIGHT INDICATOR FOR PLATFORMS



FIELDBUSES

MODBUS RTU



WDESKB-L



WINOX-L

CERTIFICATIONS



OIML R76:2006, III class, 3x10000 divisions 0.2 μ V/VSI / OIML R61 - WELMEC Guide 8.8:2011 (MID)

CERTIFICATIONS ON REQUEST



Initial verification (Legal Metrology)



UL Recognized component - Complies with the United States and Canada standards



Complies with the Eurasian Custom Union standards (Russia, Belarus, Kazakhstan)



NMI Trade Approved - Complies with the Australian standards for legal use with third parties

DESCRIPTION

- ABS weight indicator, desk version with 6 PG9 cable glands.
- Different instrument versions for different kinds of connections: cable glands, D-SUB connectors, removable terminal.
- Wall, column and panel mounting.
- Six-digit backlit LCD semialphanumeric display (20 mm height), 7 segment - 46 indicator symbols.
- Six-key membrane keyboard with buzzer.
- IP67 protection rating (IP68 WINOX-L).
- Real-time clock/Calendar with buffer battery.
- Stabilized power supply included in the desk version.

INPUT/OUTPUT AND FIELDBUSES

- RS485/RS232 serial ports for communication via ModBus RTU protocol, ASCII bidirectional or continuous one way transmission.
- 5 relay digital outputs controlled by the setpoint values or via protocols (4 outputs if analog output is present).
- 3 optoisolated PNP digital inputs: status reading via serial communication protocols (2 inputs if analog output is present).
- 1 load cell input.
- Current or voltage 16 bit analog output (option on request).
- Wifi module (on request: OPZW1RADIO).
- Selector switch for formulas/ groups selection (option on request).

WDESKB L - WINOX L

WEIGHT INDICATOR FOR PLATFORMS

MAIN FUNCTIONS

- Connections to:
 - PLC via analog output (on request)
 - PC/PLC via RS485/RS232 (up to 99 instruments with line repeaters, up to 32 without line repeaters).
 - remote display and printer via RS485/RS232.
 - up to 8/16 load cells in parallel by junction box.
 - intelligent junction box or to other Multichannel instruments: allows to have same benefits and performance of an advanced digital weighing system even using analog load cells. RS485 or RS232 connection via instrument serial port (if necessary, an optional RS485 port shall be added).
- Digital filter to reduce the effects of weight oscillation.
- Theoretical calibration (via keyboard) and real (with sample weights and the possibility of weight linearization up to 5 points).
- Tare weight zero setting.
- Automatic zero setting at power-on.


- Gross weight zero tracking.
- Semi-automatic tare (net/gross weight) and predetermined tare.
- Semi-automatic zero.
- Displaying the maximum weight value reached (peak).
- Direct connection between RS485 and RS232 without converter.
- Hysteresis and setpoint value setting.
- Weight print via keyboard or external contact with date and ti

BASE PROGRAM

- 12 groups selection by 5 setpoint from selector switch or contacts (option on request).
- Counting.
- Totalizing.

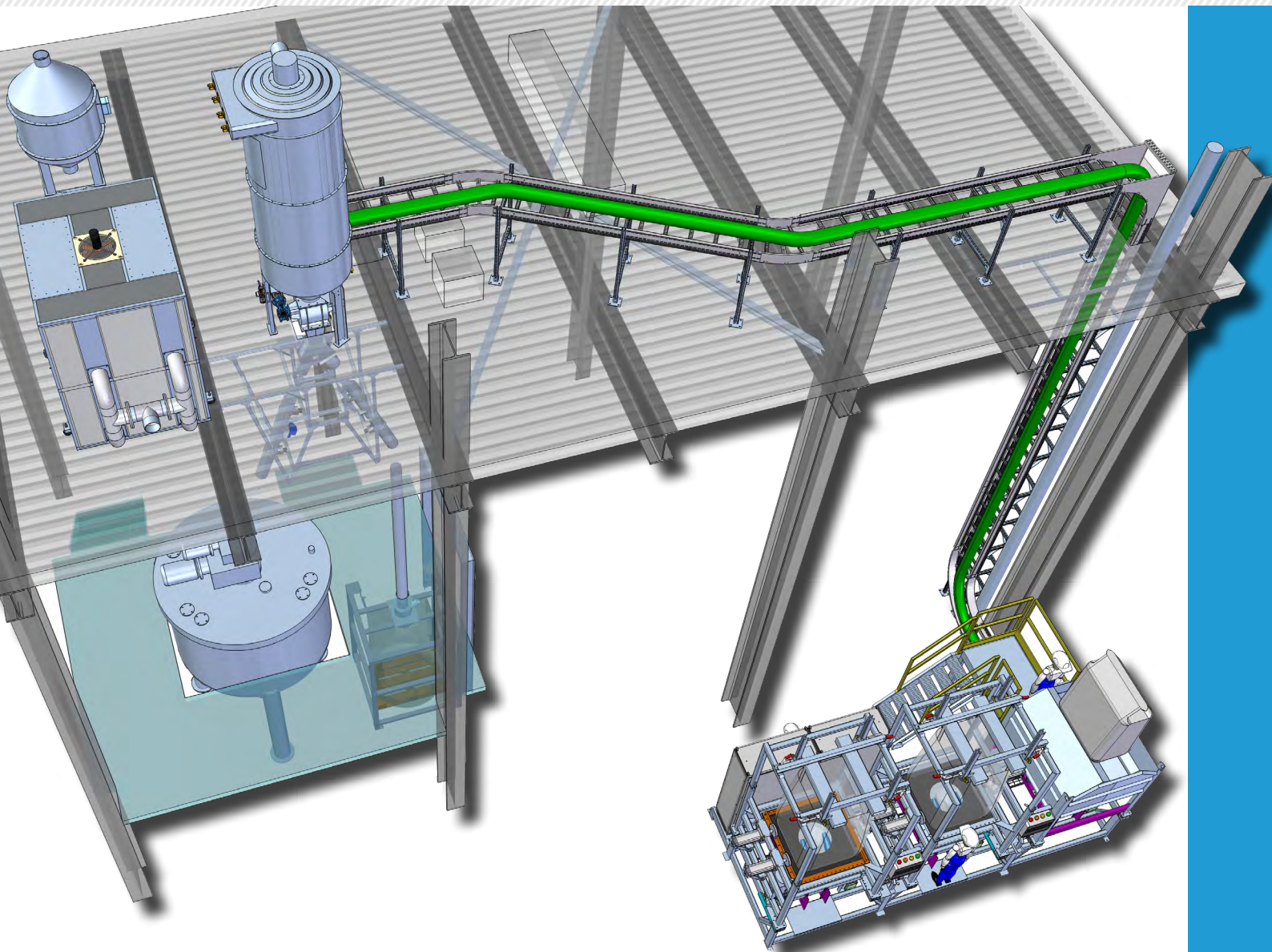
TECHNICAL FEATURES

Power supply and consumption	12÷24 VDC ±10%; 6 W (on request P version: 115÷230 VAC 50÷60 Hz 6 VA)
Number of load cells • Load cells supply	up to 8 (350 Ω) - 4/6 wires • 5 VDC/120 mA
Linearity • Linearity of the analog output	<0.01% full scale • <0.01% full scale
Thermal drift • Thermal drift of the analog output	<0.0005% full scale/°C • <0.003% full scale/°C
A/D Converter	24 bit (16000000 points) - 4.8 kHz
Divisions (with measure range ±10 mV and sensitivity 2 mV/V)	±999999 • 0.01 μV/d
Measure range	±39 mV
Load cell's sensitivity	±7 mV/V
Conversion per second	300/s
Display range	±999999
Decimals • Display increments	0÷4 • x1 x2 x5 x10 x20 x50 x100
Digital filter • Conversion rate	0.012÷7 s • 5÷300 Hz
Relay logic outputs	n. 5 - 115 VAC/150 mA
Optoisolated logic inputs	n. 3 - 5÷24 VDC PNP
Serial ports	RS485, RS232
Baud rate	2400, 4800, 9600, 19200, 38400, 115200 (bit/s)
Analog output (option on request)	16 bit = 65535 divisions. 0÷20 mA; 4÷20 mA (up to 300 Ω) 0÷10 V; 0÷5 V; -10÷10 V; -5÷5 V (min. 10 kΩ)
Humidity (condensate free)	85%
Storage temperature	-30°C +80°C
Working temperature	-20°C +60°C

	Relay digital outputs	n. 5 - 30 VAC, 60 VDC/150 mA
	Working temperature	-20°C +50°C
	Power supply device marked "LPS" (limited power source) or "Class 2"	

METROLOGICAL SPECIFICATIONS OF TYPE-APPROVED INSTRUMENTS

Applied standards	2014/31/UE - EN45501:2015 - OIML R76:2006
Accuracy class	III or IIII
Maximum number of scale verification divisions	10000 (class III); 1000 (class IIII)
Minimum input signal for scale verification division	0.2 μV/VS
Working temperature	-10°C +40°C



STAD S.r.l.

VIA PER REGGIO, 30/P
42019 SCANDIANO (RE) - ITALY
VAT nr. 01847550355

PHONE 1 (+39) 0522 989791
PHONE 2 (+39) 0522 851360
FAX (+39) 0522 765854
MAIL: stad@stadsrl.com



follow us

