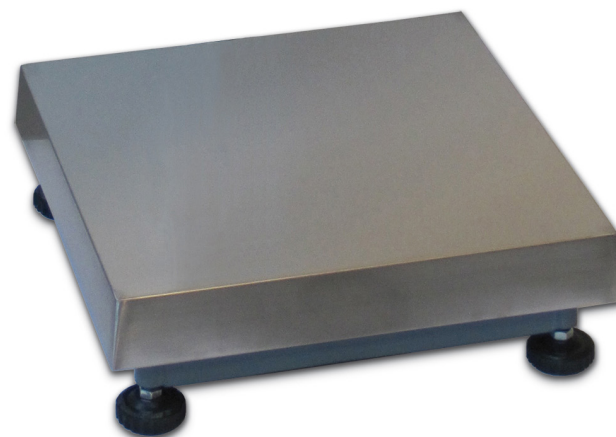




Capacity up to 600 kg



DESCRIPTION

- Painted steel tubular structure
- AISI 304 stainless steel loading top (laid)
- IP65 aluminium alloy load cell
- Galvanized steel and polyamid feet
- Connection for indicator stand

CAPACITY	kg	ACCURACY CLASS C3	CLASS C4	IECEx Ex	DIMENSION (mm)	WEIGHT (kg)	CODE
max. 6		•	•	•	300 x 300	6	ACN6
max. 15		•	•	•	300 x 300	6	ACN15
max. 30		•	•	•	300 x 300	6	ACN30
max. 50		•	•	•	300 x 300	6	ACN50
max. 60		•	–	•	400 x 400	8.5	ACN60
max. 120		•	–	•	400 x 400	8.5	ACN120
max. 150		•	•	•	600 x 600	24	ACN150
max. 300		•	•	•	600 x 600	24	ACN300
max. 600		•	–	•	800 x 800	48.5	ACN600

ON REQUEST

CERTIFICATIONS



OIML R60 C3

CERTIFICATIONS ON REQUEST



ATEX II 1GD (zone 0-1-2-20-21-22)



IECEx (zone 0-1-2-20-21-22)



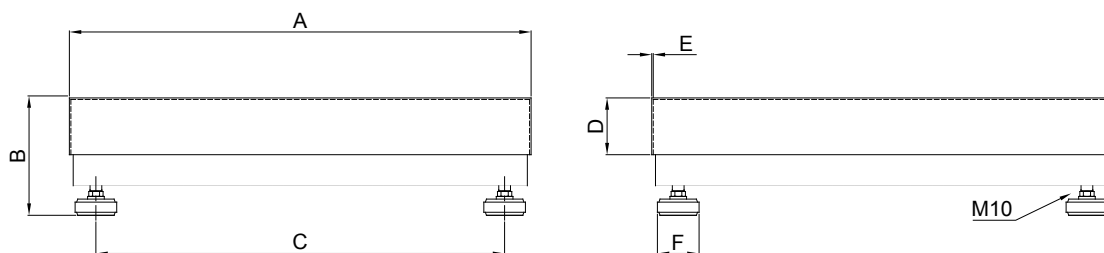
OIML R60 C4

ACN + WDESKB-L

SINGLE CELL PLATFORMS WITH STAINLESS STEEL TOP

STAD

DIMENSIONS (mm)

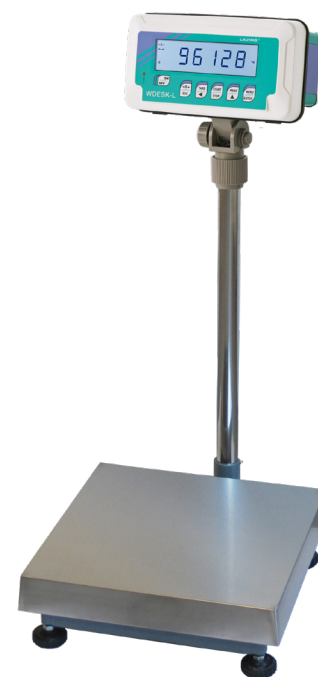


Code	Load cells capacities	Platforms	A	B	C	D	E	F	Gross Weight
ACN6 / 15 / 30 / 50	10 / 20 / 50 / 100 kg	300 x 300 mm	300	125	237	56	1	56	6 kg
ACN60 / 120	100 / 200 kg	400 x 400 mm	400	130	337	52	1	56	8.5 kg
ACN150 / 300	200 / 500 kg	600 x 600 mm	600	150	537	77	1.5	56	24 kg
ACN600	1000 kg	800 x 800 mm	800	170	715	90	1.5	56	48.5 kg

ELECTRICAL CONNECTIONS

	ACN 6-120	ACN 150-300	ACN 600
SHIELD			
+ SIGNAL	GREEN	GREEN	BLUE
+ EXCITATION	RED	RED	RED
+ REF./SENSE	BLUE	BLUE	BROWN
- SIGNAL	WHITE	WHITE	WHITE
- EXCITATION	BLACK	BLACK	YELLOW
- REF./SENSE	BROWN	YELLOW	BLACK

■ where provided



OPTIONS ON REQUEST

	DESCRIPTION	CODE
	Indicator stainless steel support column (Ø 38 mm, h 700 mm) Painted steel bracket for platform mounting.	COLONNAM + STAFFACN
	Indicator stainless steel support column (Ø 38 mm, h 700 mm) Stainless steel bracket for platform mounting.	COLONNAM + STAFFAIN

The Company reserves the right to make changes to the technical data, drawings and images without notice.