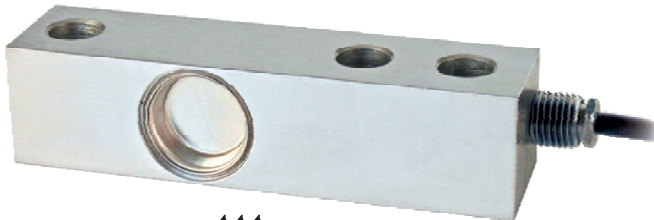




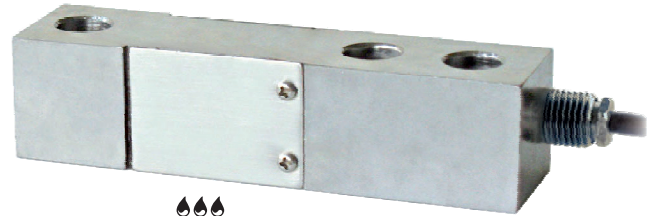
Manufactured according to OIML R60 standards

Capacity from 75 kg to 10.000 kg



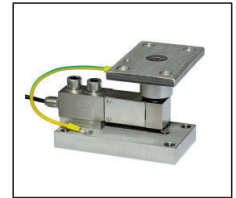
IP68

Stainless Steel
AISI 420



IP67

STF2000 Mounting kit



- AISI 420 STAINLESS STEEL
- COMBINED ERROR $\leq \pm 0.02\%$
- 75...300 kg IP67 PROTECTION RATING
- 500...10k kg IP68 PROTECTION RATING

CAPACITY	kg	ACCURACY CLASS	OIML	IECEx	Ex	EAC	PESO NETTO CELLA (kg)	CODICE
75		C3		•	•		0.9	SFTP75
150		C3		•	•		0.9	SFTP150
300		C3		•	•		0.9	SFTP300
500		C3		•	•		0.9	SFTP500
750		C3		•	•		0.9	SFTP750
1000		C3		•	•		0.9	SFTP1000
1200		C3		•	•		0.9	SFTP1200
1500		C3		•	•		0.9	SFTP1500
2000		C3		•	•		0.9	SFTP2000
3000		-		•	•		1.6	SFTP3000
5000		-		•	•		1.6	SFTP5000
10000		-		•	•		3.8	SFTP10000

ON REQUEST

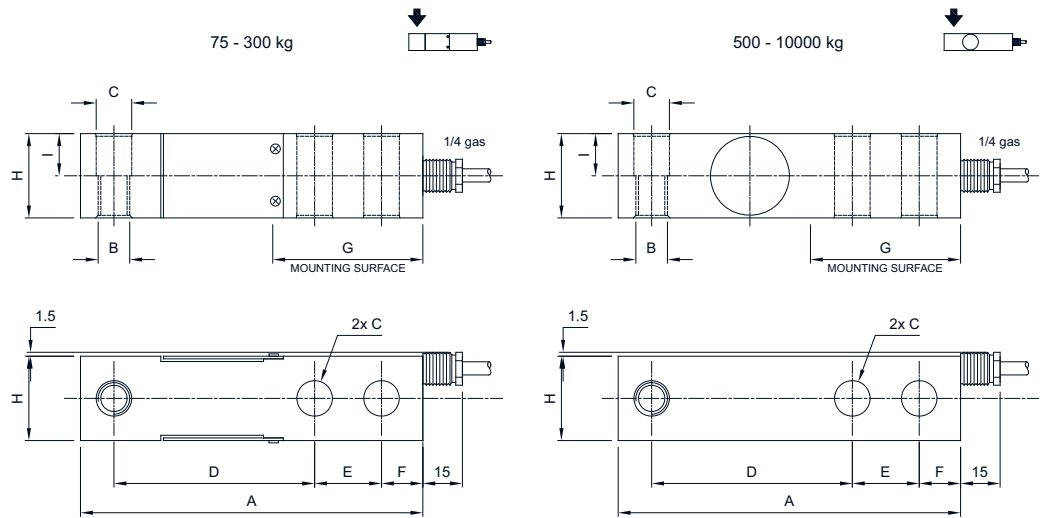
CERTIFICATIONS

CERTIFICATIONS ON REQUEST

Ex	ATEX II 1GD (zona 0-1-2-20-21-22)
IECEx Ex	IECEX II 1GD (zona 0-1-2-20-21-22)
EAC	Complies with the Eurasian Customs Union regulations for use in potentially explosive atmospheres

The Company reserves the right to make changes to the technical data, drawings and images without notice.

DIMENSIONS (mm)



	75 - 2000 kg	3000 - 5000 kg	10000 kg
A	130	171.5	222.5
B	M12x1.75	M20x2.5	M24x2
C	Ø 13.5	Ø 21	Ø 26.2
D	76.2	95.3	123.8
E	25.4	38.1	50.8
F	15.7	19.1	25.4
G	53	76	102
H	32	38	51
I	16	19	25.5

Screw	M12		M20		M24	
Screw class	6.8	8.8	6.8	8.8	6.8	8.8
	50 Nm	79 Nm	290 Nm	400 Nm	500 Nm	690 Nm

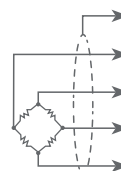
TECHNICAL FEATURES

Material	AISI 420 stainless steel		
OIML R60 Accuracy class • Verification intervals	C3 • 3000		-
Nominal load (E max)	75 - 150 - 300 - 500 - 750 1000 - 1500 - 2000 kg	3000 - 5000 - 10000 kg	
Minimum verification interval (V min)	E max / 15000		-
Combined error	≤ ±0.02%		
Protection rating	IP67 (75 - 300 kg), IP68 (500 - 10000 kg)		
Input resistance	385 Ω ± 10	Ω ± 15	400
Output resistance	350 Ω ± 3	Ω ± 5	350
Rated output	2 mV/V ± 0.4%	Max supply voltage without damage	15 V
Temperature effect on zero	0.002% °C	Zero balance	±2%
Temperature effect on span	0.0012% °C	Insulation resistance	≥ 5000 MΩ
Compensated temperature range	-10 °C / +40 °C	Safe overload (% of full scale)	150%
Operating temperature range	-20 °C / +70 °C	Ultimate overload (% of full scale)	200%
Creep at nominal load in 30 minutes	0.03%	Deflection at nominal load	0.4 mm

ELECTRICAL CONNECTIONS

Cable length	5 m*
Cable diameter	5 mm
Cores	6 x 0.25 mm ²

* 10.000 kg capacity model has a 10 m cable



Shield	
+ Signal	GREEN ●
+ Ref. / Sense	BLUE ●
+ Excitation	RED ●
- Signal	WHITE ○
- Excitation	BLACK ●
- Ref. / Sense	YELLOW ●

The Company reserves the right to make changes to the technical data, drawings and images without notice.